

# **LANTASTIC® INSTALLATION AND SETUP MANUAL**

---

Instructions for installing LANtastic for Windows® NT, Windows 95/98, Windows 3.x and DOS

---

#9861 Edition 2.01 10/27/10 [2.0 1/7/00 – RK]

Writer/Designer: Rhonda Knotts

## **COPYRIGHT**

© 2010 PC Micro Systems, Inc. All Rights Reserved. This manual and the software described in it are copyrighted. All rights reserved. No part of this publication may be reproduced, transmitted, transcribed, stored in a retrieval system or translated into any language in any form by any means without the written permission of PC Micro Systems, Inc.

## **TRADEMARKS**

PC Micro, NetModem NetSerial, ModemShare and LANtastic are trademarks of PC Micro Systems, Inc. Microsoft and Windows are registered trademarks of Microsoft Corporation. NetWare is a registered trademark of Novell, Inc. Adobe and Acrobat are trademarks of Adobe Systems Incorporated, which may be registered in certain jurisdictions. Other brand names, company names and product names are trademarks or registered trademarks of their respective companies.

## **LANTASTIC LICENSE AGREEMENT**

CAREFULLY READ ALL OF THE TERMS AND CONDITIONS OF THIS LICENSE AGREEMENT BEFORE USING THE SOFTWARE ("Software") OR THE HARDWARE ("Hardware"). BY INSTALLING OR USING THIS PRODUCT, YOU INDICATE YOUR COMPLETE AND UNCONDITIONAL ACCEPTANCE OF THESE TERMS AND CONDITIONS. IF YOU DO NOT AGREE TO THE TERMS OF THIS AGREEMENT, PROMPTLY RETURN THE PRODUCT FOR A FULL REFUND. This document is a legal agreement between you and PC Micro Systems, Inc. ("PC MICRO") concerning the use of the Software. THIS AGREEMENT CONSTITUTES THE COMPLETE AGREEMENT BETWEEN YOU AND PC MICRO.

### **1. LICENSE**

PC MICRO grants to you a non-exclusive, non-transferable personal license to use the Software in object code form only (and specifically not in source code form) on the platforms and on not more than the number of servers/workstations indicated in your purchase documentation provided the relevant servers/workstations are part of a single network installation. A single network installation is defined as any continuously connected group of not more than 500 servers/workstations on one cabling scheme without hardware or software bridges or routers. For a network server, the Software is considered "in use" when any portion of the Software is either loaded in memory or virtual memory ("Loaded") or stored on a hard disk or other storage device ("Stored"). For single-user computers or workstations attached to a network, the quantity of the Software "in use" is considered to be the greater of (i) the maximum number of computers on which the Software is Loaded at any one time, or (ii) the maximum number of computers on which the Software is Stored. On a multi-user computer, the quantity of Software "in use" is considered to be the maximum number of user sessions executed at any one time. If this Software is an upgrade or trade-up from a previous version, you may use the Software only if you are an authorized user of a qualifying product as determined by PC MICRO. When you install the upgrade, you must delete the copy of the qualifying product. This Agreement supersedes any prior version license and governs your use of the Software. You may use PC MICRO's documentation ("Documentation") which includes publications such as the User's Manual, other reference manuals, programmer guides and installation guides to assist in the use of the Software. PC MICRO and its suppliers retain title to and ownership of their respective interests in the software, any backup copies and any proprietary rights related to the Software. You may make one (1) archival copy of the Software for backup. You may not copy the Documentation or make alterations or modifications to, merge, adapt, decompile, disassemble, reverse engineer, copy, create derivative works or attempt to discover the source code of, or otherwise use the Software except as provided herein. The Software and Documentation, or any portion or copy thereof, may not be sublicensed, time-shared, distributed, rented, leased, loaned or otherwise transferred, in whole or part, to third parties. If the Software is demonstration and evaluation software, you may not transfer the Software for commercial purposes. Both the license and your right to use the Software terminate automatically if you violate any part of this Agreement. In the event of termination, you must immediately destroy all copies of the Software and Documentation or return them to PC MICRO.

### **2. LIMITED WARRANTY**

PC MICRO warrants that (a) the Software will perform substantially in accordance with the accompanying written materials for a period of (90) days from the date of receipt, and (b) any Hardware accompanying the Software will be free from defects in materials and workmanship under normal use and service for a period of three (3) years from the date of receipt. Any implied warranties on the Software and Hardware are limited to ninety (90) days and three (3) years, respectively. Some states/jurisdictions do not allow limitations on duration of an implied warranty, so the above information may not apply to you.

CUSTOMER REMEDIES. PC MICRO and its suppliers' entire liability and your exclusive remedy shall be at PC Micro's option either (a) return of the price paid, or (b) repair or replacement of the Software or Hardware that does not meet PC Micro's Limited Warranty and which is returned to PC Micro with a copy of your receipt. This Limited Warranty is void if failure of the Software or Hardware has resulted from accident, abuse, or misapplication. Any replacement Software or Hardware will be warranted for the remainder of the original warranty period or thirty (30) days, whichever is longer. Outside the United States, neither these remedies nor any product support services offered by Artisoft are available without proof of purchase from an authorized non-U.S. source. THIS WARRANTY DOES NOT APPLY TO DEFECTS DUE DIRECTLY OR INDIRECTLY TO MISUSE, ABUSE, NEGLIGENCE, ACCIDENT, REPAIRS OR ALTERATIONS MADE BY THE CUSTOMER OR ANOTHER PARTY, OR IF THE ARTISOFT SERIAL NUMBER HAS BEEN REMOVED OR DEFACED. ARTISOFT AND ITS SUPPLIERS DISCLAIM ALL OTHER WARRANTIES, REPRESENTATIONS, PROMISES AND GUARANTEES, EXPRESS OR IMPLIED, STATUTORY OR OTHERWISE, ON THE SOFTWARE, MEDIA, DOCUMENTATION OR RELATED TECHNICAL SUPPORT INCLUDING, WITHOUT LIMITATION, THE IMPLIED WARRANTIES OF MERCHANTABILITY, PERFORMANCE AND FITNESS FOR A PARTICULAR PURPOSE. ARTISOFT WILL NOT BE LIABLE FOR ANY BUG, ERROR, OMISSION, DEFECT, DEFICIENCY OR NONCONFORMITY IN ANY SOFTWARE. AS A RESULT, THE SOFTWARE AND DOCUMENTATION IS LICENSED "AS IS", AND THE PURCHASER ASSUMES THE ENTIRE RISK AS TO ITS QUALITY AND PERFORMANCE.

### 3. LIMITATION OF LIABILITY

IN NO EVENT WILL PC MICRO OR ITS SUPPLIERS BE LIABLE FOR INDIRECT, SPECIAL, INCIDENTAL, CONTINGENT, CONSEQUENTIAL OR SIMILAR DAMAGES OF ANY KIND RESULTING FROM ANY DEFECT IN THE SOFTWARE OR DOCUMENTATION, INCLUDING, WITHOUT LIMITATION, ANY LOST PROFITS OR SAVINGS, DAMAGES FROM BUSINESS INTERRUPTION, LOSS OF OR TO DATA, COMPUTER PROGRAMS, BUSINESS, DOWNTIME, GOODWILL, DAMAGE TO OR REPLACEMENT OF EQUIPMENT OR PROPERTY, OR ANY COSTS OF RECOVERING, REPROGRAMMING OR REPRODUCING ANY PROGRAM OR DATA USED IN CONJUNCTION WITH THE PRODUCTS, EVEN IF PC MICRO, ITS SUPPLIERS OR ANYONE ELSE HAS BEEN ADVISED OF THE POSSIBILITY OF SUCH DAMAGES. YOU AGREE THAT ARTISOFT'S AND ITS SUPPLIERS' LIABILITY ARISING OUT OF CONTRACT, NEGLIGENCE, STRICT LIABILITY IN TORT OR WARRANTY SHALL NOT EXCEED THE AMOUNT PAID BY YOU FOR THIS PRODUCT. ANY WRITTEN OR ORAL INFORMATION OR ADVICE GIVEN BY ARTISOFT DEALERS, DISTRIBUTORS, AGENTS OR EMPLOYEES WILL IN NO WAY INCREASE THE SCOPE OF THIS WARRANTY, NOR MAY YOU RELY ON ANY SUCH WRITTEN OR ORAL COMMUNICATION. Some jurisdictions do not allow the limitation or exclusion of implied warranties or liability for incidental or consequential damages, and some jurisdictions have special statutory consumer protection provisions which may supersede this limitation, so the above limitation or exclusion may not apply to you. This warranty gives you specific legal rights, and you may also have other rights which vary from jurisdiction to jurisdiction.

### 4. SUPPORT

PC MICRO will attempt to answer your technical support requests concerning the Software; however, this service is offered on a reasonable efforts basis only, and PC MICRO may not be able to resolve every support request. PC MICRO supports the Software only if it is used under conditions and on operating systems for which the Software is designed. For support requests, contact PC Micro on the support request form at [www.pcmicro.com/lantastic](http://www.pcmicro.com/lantastic) IN NO EVENT WILL PC MICRO OR ITS SUPPLIERS BE LIABLE FOR INDIRECT, SPECIAL, INCIDENTAL, CONTINGENT, CONSEQUENTIAL OR SIMILAR DAMAGES OF ANY KIND RESULTING FROM THE DELIVERY OF TECHNICAL SUPPORT SERVICES OF ANY KIND. THIS INCLUDES, BUT IS NOT LIMITED TO, DAMAGE TO YOUR COMPUTER EQUIPMENT AND THE LOSS OF YOUR DATA.

### 5. EXPORT LAW ASSURANCES

You agree and certify that, except with the prior written consent of PC MICRO and in accordance with the regulations issued by the Bureau of Export Administration of the U. S. Department of Commerce, Washington, D.C. 20230, neither the Software nor any other technical data received from PC MICRO, nor the direct product thereof, will be transmitted, directly or indirectly, or exported outside the United States and specifically not to any Group Q, S, W, Y or Z country specified in Supplement No. 1 to Section 370 of the Export Administration Regulations issued by the U.S. Department of Commerce.

## 6. GOVERNMENTAL RESTRICTED RIGHTS

The Software and/or Documentation are provided with RESTRICTED and limited RIGHTS. Use, duplication or disclosure by the U. S. Government is subject to restrictions as set forth in FAR 52.227-14 (June 1987) Alternate III (g)(3)(June 1987), subparagraph (c)(1)(ii) of the Rights in Technical Data and Computer Software clause at DFARS 252.227-7013 (June 1988), or the Commercial Computer Software-Restricted Rights at FAR 52.227-19 (June 1987), as applicable. Contractor/Manufacturer is PC Micro Systems, Inc. 1879 Campbell Ave. Thousand Oaks, CA. 91360

## 7. COPYRIGHT

The enclosed Software and Documentation are protected by copyright laws and international treaty provisions and are the proprietary products of PC MICRO and its third party suppliers from whom PC MICRO has licensed portions of the Software. Such suppliers are expressly understood to be beneficiaries of the terms and provisions of this Agreement. All rights not expressly granted are reserved by PC MICRO or its suppliers.

## 8. FORCE MAJEURE

PC MICRO shall not be liable for any delay or failure to perform due to any cause beyond its control. Causes include, without limitation, strike, acts of God, acts of the purchaser, interruptions of transportation or inability to obtain necessary labor, materials or facilities. The delivery schedule shall be considered extended by a period of time equal to the time lost because of any excusable delay. In the event PC MICRO is unable to wholly or partially perform because of any cause beyond its control, PC MICRO may terminate this order without any liability to you.

## 9. MISCELLANEOUS

If any provision of this Agreement is found to be unlawful, void or unenforceable, then that provision shall be severed from this Agreement and will not affect the validity and enforceability of any of the remaining provisions. The laws of the State of California shall govern this Agreement.

Copyright 2010 PC Micro Systems, Inc. All rights reserved.

PC Micro Systems, Inc.  
1879 Campbell Ave.  
Thousand Oaks, California. USA.

---



# CONTENTS

<b>CHAPTER 1. INTRODUCING LANTASTIC 8.0 .....</b>	<b>1</b>
Welcome to LANtastic 8.0 .....	1
Compatibility with other versions of LANtastic.....	2
About the other products on the CD-ROM .....	2
<b>CHAPTER 2. GETTING THE INFORMATION YOU NEED.....</b>	<b>3</b>
What's in the documentation set .....	3
Using the Online Library .....	6
Downloading from Artisoft's FTP site.....	6
Downloading the reader and Online Library files .....	6
Installing the reader on your hard drive .....	7
In Windows 95/98 or NT/2000/XP .....	7
In Windows 3.x .....	7
In DOS .....	8
Viewing and navigating the PDF files.....	8
In Windows (any version).....	8
Printing the PDF files.....	9
<b>CHAPTER 3. PLANNING YOUR INSTALLATION.....</b>	<b>11</b>
Getting help with the installation.....	11
Compatibility with other versions of LANtastic.....	11
Upgrading from LANtastic v5.0 or earlier.....	11
Installing an unlimited site upgrade or unlimited network.....	12
Basic questions and answers.....	12
Pre-installation checklist.....	13
Making installation disks.....	14
Creating disk images from the CD-ROM .....	14
LANtastic installation files.....	14
Making diskettes for other products .....	15
<b>CHAPTER 4. INSTALLING LANTASTIC FOR WINDOWS NT .....</b>	<b>17</b>
Compatibility with other versions of Windows .....	17
Differences from previous versions of LANtastic.....	17
Removing a previous version of LANtastic.....	18
Backing up the LANtastic Database .....	18
Saving your Custom Control Panel configuration.....	19
Uninstalling LANtastic .....	19

Installing the software .....	19
Using the Autorun .....	19
Installation steps.....	20
Running the LANtastic Custom Control Panel.....	24
Restoring your LANtastic settings.....	24
Restoring the LANtastic database .....	24
Restoring your Custom Control Panel settings.....	25
Post-installation tasks .....	25
Troubleshooting during installation .....	26
<b>CHAPTER 5. INSTALLING LANTASTIC FOR WINDOWS 95/98.....</b>	<b>27</b>
Compatibility with other versions of LANtastic.....	27
Removing a previous version of LANtastic .....	27
Backing up the LANtastic Database .....	28
Saving your Custom Control Panel configuration.....	28
Uninstalling LANtastic .....	28
Removing LANtastic for Windows 3.x from a computer running Windows 95/98.....	29
Installing the software .....	29
Using the Autorun feature .....	30
Installation steps.....	30
Removing unneeded network components.....	34
Running the LANtastic Custom Control Panel.....	34
Restoring your LANtastic settings.....	35
Restoring the LANtastic database .....	35
Restoring your Custom Control Panel settings.....	35
About the primary logon box .....	36
Post-installation tasks .....	37
Troubleshooting during installation .....	38
<b>CHAPTER 6. INSTALLING LANTASTIC FOR WINDOWS 3.X.....</b>	<b>39</b>
Compatibility with other versions of LANtastic.....	39
Installing the software .....	39
Making permanent connections.....	46
To make a drive connection.....	46
To make a printer connection .....	47
Post-installation tasks .....	48
Troubleshooting during installation .....	49



<b>CHAPTER 7. INSTALLING LANTASTIC FOR DOS .....</b>	<b>51</b>
Compatibility with other versions of LANtastic.....	51
Installing the software.....	51
Making permanent connections .....	55
To make a drive connection.....	55
To make a printer connection .....	56
Using INSTALL switches.....	57
Post-installation tasks.....	58
Troubleshooting during installation.....	59
<b>CHAPTER 8. FINAL SETUP ISSUES .....</b>	<b>61</b>
Printing from Windows 3.x applications.....	61
SYSTEM.INI and WIN.INI file changes .....	62
SYSTEM.INI changes .....	63
LANtastic section .....	64
WIN.INI change.....	65
Adding an HP JetDirect printer to your network .....	65
<b>INDEX.....</b>	<b>69</b>



# INTRODUCING LANtASTIC 8.0

## CHAPTER CONTENTS

Welcome to LANtastic 8.0 . . . . .below  
Compatibility with other versions of LANtastic . . . . . 2  
About the other products on the CD-ROM . . . . . 2

## Welcome to LANtastic 8.0

---

Welcome to LANtastic 8.0. Previous versions of LANtastic allowed compatibility with Windows 95/98, Windows 3.x and DOS. LANtastic 8.0 adds year-2000 compliance and Windows NT/2000/XP SP1 support plus Windows 98-SE. Features of 8.0 include:

**TIP...**

For additional information on these features, see the LANtastic User's Manuals, located on the CD-ROM in Adobe Acrobat Portable Document Format (PDF). To learn more about using PDF files, see "Using the Online Library" on page 6.

Features	Included in LANtastic 8.0 for:			
	Windows NT 2000 XP	Windows 95/98	Windows 3.x	DOS
Year-2000 compliance	✓	✓	✓	✓
LANtastic mail and network chat	✓	✓	✓	✓
Pop-up messaging	✓	✓	✓	✓
Root (dot) directory support	✓	✓	✓	✓
MIGRATE account transfer utility	✓	✓	N/A	N/A
Mizer customizing utility	✓	✓	N/A	N/A
Remote management of LANtastic DOS, Windows 3.x and LANtastic	✓	✓	✓	✓
Server extended memory management support	N/A	N/A	✓	✓
Integrated permanent connections management	✓	✓	✓	✓
Improved RPL boot image creation	N/A	N/A	✓	✓

## Compatibility with other versions of LANtastic

---

Computers running LANtastic 8.0.x can share files, printers and other resources with each other, as well as with PCs running LANtastic for Windows NT v1.0 or LANtastic 7.0 for Windows 95, Windows 3.x and DOS.

For optimum performance and compatibility, it's strongly suggested that you upgrade any computers running a version of LANtastic *earlier than 7.0*, to LANtastic 8.0. For your convenience, you can purchase additional LANtastic 8.0 licenses by phone. To do so, call the PC Micro Direct Team as described on the last page of the Directory of Services that came with this product.

If you have computers running LANtastic 7.0 or LANtastic for Windows NT v1.0, you can leave them as they are, or do one of the following:

- **Upgrade them to LANtastic 8.0**

By doing so, you'll gain Windows 98-SE support and any other enhancements that were made for LANtastic 8.0. However, you'll lose the LANtastic Internet Gateway and modem-sharing features that came with LANtastic 7.0.

In order to upgrade computers running LANtastic for Windows 95 or LANtastic for Windows NT v1.0, you'll need to uninstall the existing version of LANtastic before you install LANtastic 8.0. Be sure to read the section called "Removing a previous version of LANtastic" in the appropriate software installation chapter(s) of this manual.

- **Apply the LANtastic 7.0 update**

By applying the update, you'll benefit from any LANtastic 7.0 software enhancements. You'll be able to retain LANtastic 7.0's Internet Gateway and modem-sharing features and the update can be installed without first uninstalling LANtastic 7.0. Note, however, that you won't gain Windows 98 support.

To obtain the LANtastic 7.0 update, visit the PC Micro web site at [www.pcmicro.com](http://www.pcmicro.com) or contact PC Micro Customer Service.

## About the other products on the CD-ROM

---

The LANtastic 8.0 CD-ROM contains evaluation copies of PC Micro's current networking and communications software products. For information on purchasing full versions of any of these products, contact the PC Micro Direct Team as described on the last page of the Directory of Support Services that you received with this product.

# GETTING THE INFORMATION YOU NEED

### CHAPTER CONTENTS

What's in the documentation set . . . . .	3
Online Help . . . . .	4
LANtastic Readme file . . . . .	4
Online Library . . . . .	4
Viewing and navigating the PDF files . . . . .	8
Printing the PDF files . . . . .	9

You'll find information about installing, using and troubleshooting LANtastic 8.0 in a number of places – from this printed manual to an Online Library of electronic files. Each of these sources is described in this chapter.

### What's in the documentation set ---

#### **Installation and Setup Manual (this manual)**

Here you'll find the instructions you need to get LANtastic installed and running. Information provided includes:

- Answers to common installation questions.
- Pre-installation checklist and information.
- Steps for installing your LANtastic software on each of the supported operating systems.
- Post-installation tasks.

#### **LANtastic User's Manuals**

There are four user's manuals – one for each LANtastic interface (Windows NT, Windows 95/98, Windows 3.x and DOS) provided on the CD-ROM in portable document format (PDF). The NT Manual covers use under Windows NT 4.0, Windows 2000, and Windows XP Service Pack 1 and earlier.

The user's manuals are located in:

**Manuals\LANtasti\[OS name]\[manual name.pdf].**

For example, the LANtastic for Windows 95/98 User's Manual would be found in:

**Manuals\LANtasti\Win9x\9x\_um.pdf**

### Troubleshooting Manual

This manual, provided on the CD-ROM in portable document format (PDF), contains a categorized list of symptoms of common LANtastic problems, their possible causes and solutions. It also provides a table of installation-related error messages in alphabetical order, and recommended solutions.

You can find the LANtastic Troubleshooting Manual on the CD-ROM in: **Manuals\LANtasti\Trouble.pdf**

### Online Help

Each of the LANtastic platforms contains an online Help system that describes all of its functions – from easy to advanced.

### LANtastic Readme file

The LANtastic Readme file contains important information that became available after the manuals were finalized. To view the Readme file:

- **In Windows 95/98 or Windows NT**, click the View Readme button on the Online Information page of the LANtastic Custom Control Panel.
- **In Windows 3.x**, double-click the Readme icon in the LANtastic program group.
- **In DOS**, README.TXT is in your LANTASTI directory. Use any text editor (such as DOS Edit). Go to C:\LANTASTI and type: **EDIT README.TXT <Enter>**.

### Online Library

The Online Library is a set of files on the LANtastic CD-ROM, each providing detailed information on a specific topic. These files, provided as PDFs, look like the pages in this book. This makes it easy for you to print them out and duplicate them to create your own hard copy library of the topics you need. You can also use them online to take advantage of the hypertext links.

You can find the Online Library files on the CD-ROM in the following directory: **Manuals\LANtasti\Docs\[filename.pdf]**. For example, you would find the PDF on hardware in: **Manuals\LANtasti\Docs\Hardware.pdf**.

The Online Library consists of the following files:

#### General

Beginner.pdf	Introduction to some fundamental networking concepts and the benefits of using LANtastic.
Glossary.pdf	Definitions of terms you may encounter as you work with LANtastic.
Lncheck.pdf	Using LANCHECK in Windows 95, Windows 3.x and DOS to test network communication.
Hardware.pdf	Provides guidelines and instructions for choosing and installing your network hardware.

Windows 95/98

Errs_95.pdf	Alphabetical table of error messages, possible causes and suggested solutions.
Lnetm_95.pdf	Alphabetical listing of commands and switches for the DOS-based LNET_MGR program.
Lnet_95.pdf	An alphabetical listing of commands and switches for the LNET program.

Windows 3.x and DOS

Clent_dw.pdf	Connecting to NCP-based (Novell) and SMB-based (Microsoft) networks with LANtastic 8.0.
Commd_dw.pdf	A complete listing of the commands, switches and arguments for LANtastic for Windows v3.x and DOS.
Errs_dw.pdf	Alphabetical table of LANtastic error messages, possible causes and suggested solutions.
Indir_dw.pdf	Using the indirect files feature to reference a file by more than one name.
lpx_dw.pdf	Artisoft's IPX Routable NETBIOS, a feature that allows network managers full control of traffic on networks running multiple operating systems.
Lcach_dw.pdf	Use LANcache to improve the performance of a file server.
Memry_dw.pdf	General guidelines about using memory management software with LANtastic 8.0 for Windows 3.x and DOS.
Multi_dw.pdf	General guidelines for using more than one network adapter card in a computer.
Nbset_dw.pdf	Using the NBSETUP program to let a non-Artisoft NETBIOS allocate more sessions and Network Control Blocks.
Ndis_dw.pdf	Using LANtastic NDIS Support for any third-party network adapter that provides an NDIS driver in your LANtastic network.
Rboot_dw.pdf	Using LANtastic's remote booting feature to run LANtastic on diskless workstations.

DOS

Accts_d.pdf	Creating a set of login accounts to restrict access to servers.
Cfgsrv_d.pdf	Setting the server startup parameters to fine-tune the performance of your LANtastic network.
Crldir_d.pdf	Creating multiple control directories in order to have more than one network configuration saved.
Drives_d.pdf	Sharing files and using drives with LANtastic.
Expand_d.pdf	Expanding and changing your network to fit your needs.
Imprv_d.pdf	Fine-tuning network performance for large or heavily-used networks.
Mlcht_d.pdf	Instructions for using LANtastic's Mail and Chat features.
Mngprt_d.pdf	Instructions on managing the many printing features available with LANtastic.
Mngsrv_d.pdf	Information about monitoring and managing servers for greater network efficiency and security.
Print_d.pdf	Printing with LANtastic 8.0 for DOS.
Shres_d.pdf	Instructions on sharing printers, disk drives, CD-ROM drives and other devices attached to a server.

## Using the Online Library

---

If you have the LANtastic CD-ROM, which includes the Adobe Acrobat Reader and the Online Library files, skip ahead to “Installing the reader on your hard drive” on page 7.

If you can't get the files off of the LANtatic CD-ROM, you can:

- Get the files from PC Micro's FTP server, as explained in the next section.
- Or**
- Find the information you need in the LANtastic for Windows NT, Windows 95/98 or Windows 3.x online Help. For DOS-related reference information, see the text files in the LANTASTI directory. The user's manuals for each platform provide further details on these alternate sources of reference information.

### Downloading from PC Micro's FTP site

The Online Library files are also provided on the PC Micro FTP server at **ftp.pcmicro.com**. Enter **anonymous** for the User Name and enter your email address (example: jane@acme.com) for the Password.

If you don't have the LANtastic 8.0 CD and you want to use the PDF files, you'll need to:

- Download the Adobe Acrobat Reader to your computer.
- Download the Online Library files from the FTP server.
- Install the reader on your computer.

### Downloading the reader and Online Library files

**Note...** If you already have the Acrobat Reader installed on your computer, you'll only need to download the PDF files.

1. Make directories on your hard disk to hold the reader and the Online Library files. For example, **C:\DOCS**.
2. Access the Artisoft electronic site of your choice. For information on using these sites, refer to the Directory of Support Services that came in your package.

All of the files you'll need, including the Acrobat Reader and the Online Library PDF files, can be found in the User Documentation section on any of the electronic sites.



3. Follow the instructions at the site of your choice to download the reader and files. Place them in the directory you created in step 1 above.
4. Follow the instructions at the site of your choice to download one or more PDF files from the Online Library.

For a list and description of the PDF files, see the table beginning on page 4.

## Installing the reader on your hard drive

### In Windows 95/98 or NT/2000/XP

1. If you're installing from CD-ROM, put it into the drive. Or if you downloaded the reader to your hard drive change to the directory on your computer where you downloaded the reader, for example: **C:\DOCS**.
2. Close all applications, then click Start, Run.
3. If you're installing from CD-ROM, type **D:\ACROBATWIN32\ACRORD32** where D: is your CD-ROM drive letter, then click OK.

Or, if the reader is on your hard drive, type **C:\DOCS\ACROREAD** where C:\DOCS\ACROREAD is the location on your hard drive where you downloaded the reader.

4. Simply click Accept or press Enter to continue past the licensing screen.
5. Click Install or press **Enter** to accept the default installation path, then click OK to continue past the registration message.
6. Type in your name and press the **Tab** key, then type your organization name and press **Enter**.
7. When the installation is finished and Windows restarts, run ACRORD32.EXE in your ACROREAD folder.

You're now ready to open and use the Online Library PDF files, as described in the "Viewing and navigating the PDF files" on page 8.

### In Windows 3.x

1. If you're installing from CD-ROM, put it into the drive. Or if you downloaded the reader to your hard drive change to the directory on your computer where you downloaded the reader, for example: **C:\DOCS**.
2. Close all applications, then from the File menu, click Run.
3. If you're installing from CD-ROM, type **D:\ACROBATWIN16\ACRORD16** where D: is your CD-ROM drive letter, then click OK.

Or If you downloaded the reader to your hard drive, type **C:\DOCS\ACROREAD** where C:\DOCS\ACROREAD is the location on your hard drive where you downloaded the reader.

4. Click on Accept or press Enter to continue past the licensing screen.
5. Click Install or press **Enter** to accept the default installation path, then click OK to continue past the registration message.
6. Type in your name and press the **Tab** key, then type your organization name and press **Enter**.
7. When the installation is finished and Windows restarts, double-click the ACROREAD icon in your Adobe Acrobat program group.

You're now ready to open and use the Online Library PDF files, as described in the "Viewing and navigating the PDF files" on page 8.

### In DOS

Because Adobe Corporation does not provide a current Acrobat reader for DOS, you must use the reader for Windows 95/98 or Windows 3.x on a Windows computer, to view and print the DOS-related PDF files.

Follow the instructions for installing the Windows 95/98 or Windows 3.x reader on page 7.

Then follow the instructions for "Viewing and navigating the PDF files in Windows 95/98 or Windows 3.x" below and "Printing the PDF files" on page 9.

## Viewing and navigating the PDF files \_\_\_\_\_

### In Windows (any version)

1. With the Acrobat Reader running, click the File menu then click Open.
2. Select or type in the path to the PDF you want to use. For example, if you want to use a PDF on the LANtastic CD-ROM, find your CD-ROM drive in the Drives field by selecting or typing in the path **D:\DOCS** (where **D:** is your CD-ROM drive letter).
3. In the File List field, double-click the document you want to view. Then follow the steps below to use the manual.
4. Click the View menu, then click Bookmarks and Page. A list of the main sections in the file appears on the left side of your screen.

You can enlarge the Bookmarks window by dragging the double-triangle icon (next to the lower right corner of that window) to the right.

5. Click the triangle to the left of a listing in the Bookmarks window to see its subsections.

6. You can tell when an item in the file is hypertext-linked by the way your cursor looks. Ordinarily, the cursor looks like an open hand. Any time the hand passes over a hypertext-linked item, it turns into a pointing finger. Just click to use that link. One click of the mouse takes you from the Chapter Contents list to a topic's location. Cross-references are linked, too. You can click a cross-reference such as "see page 16" and jump directly to the topic on page 16.
7. You can look for a specific topic with the Find feature. Just click the binoculars icon in the toolbar and type in a keyword or two. You can repeat the Find command by pressing the **F3** key until you find what you're looking for.
8. It's a good idea to pull down the Help menu to learn how to use the reader's toolbar, status bar and other features. For instance, it's helpful to know about the Go Back feature under the View menu, which retraces links you've used and takes you back to your starting point.

## Printing the PDF files

---

You can print all or parts of a PDF file by following these steps:

1. Open the PDF file you want to print, then pull down the File menu and click Print.
2. Select All, Current or click a page range, then click OK.



# PLANNING YOUR INSTALLATION

## CHAPTER CONTENTS

Getting help with the installation . . . . .	11
Upgrading from LANtastic v5.0 or earlier . . . . .	11
Basic questions and answers. . . . .	12
Installing an unlimited site upgrade or unlimited network. . . . .	12
Pre-installation checklist. . . . .	13

This chapter provides general guidelines and answers some of the questions you may have about installing LANtastic 8.0.

## Getting help with the installation \_\_\_\_\_

LANtastic is designed for maximum ease of use, and is renowned for its simplicity. It's also a very powerful business tool that can be configured in many ways to enhance functionality.

Because it's user-friendly, many customers install LANtastic themselves. However, to ensure that you get the maximum possible benefit from your LANtastic network, it's recommended that a qualified professional perform the installation for you. For information on locating LANtastic resellers in your area, contact the PC Micro Direct Team as described on the last page of the Directory of Services you received with this product.

## Compatibility with other versions of LANtastic \_\_\_\_\_

To learn how LANtastic 8.0 works with other versions of LANtastic, see "Compatibility with other versions of LANtastic" on page 2.

## Upgrading from LANtastic v5.0 or earlier

If you're upgrading computers running LANtastic v5.0 or earlier, see the LANtastic Readme.txt file for important instructions.

## **Installing an unlimited site upgrade or unlimited network \_\_\_\_\_**

If you purchased a LANtastic 8.0 unlimited site upgrade or unlimited network package, and you have more than 100 computers, you must call PC Micro before you begin installation on computer number 101. See the LANtastic Readme.txt file for instructions.

## **Basic questions and answers \_\_\_\_\_**

- Q. Can I use all four of the LANtastic interfaces that came in my LANtastic package?**
- A.** That depends on your license. If, for example, you purchased a 2-10 user license, you could install LANtastic for Windows NT on one computer, LANtastic for Windows 95/98 on three computers, LANtastic for Windows 3.x on four computers and LANtastic for DOS on two computers. However, if you purchased a single user license, you're limited to installing only one LANtastic interface.
- Q. Do I need to install my adapter and cable before I install LANtastic?**
- A.** Yes. You must first install your network adapters, connect your computers using the network cables, and set up any other network hardware. For general guidelines on how to do this see the file called Hardware.pdf in the Online Library. See your hardware documentation for specific installation instructions.
- Q. How much time will it take to install the software?**
- A.** Plan on spending approximately 15 – 45 minutes on each computer. The length of time varies depending on the LANtastic interface you're installing, the speed of your computer, etc.
- Q. Are there special considerations for running memory management software?**
- A.** Yes. Refer to the PDF file called Memry\_dw.pdf for general guidelines about using memory management software with LANtastic. For detailed information, refer to the documentation that came with your memory manager software.

## Pre-installation checklist

---

This section covers some of the things you should consider as you install LANtastic.

- Install your network hardware.** Make sure all your computers have network adapters installed and cabling attached. For instructions, refer to your network adapter documentation and the file called `Hardware.pdf` in the Online Library.

**Note...** Also make sure that none of your network adapters are set to use IRQ 2 or IRQ 9.

- Install Microsoft Windows NT 4.0 Service Pack 3 or higher.** If you're running Windows NT 4.0, you'll need to install Service Pack 3 or higher (if you haven't already done so) **before** you install LANtastic for Windows NT.

**Hint...** If you're unsure as to whether Service Pack 3 or higher is already installed on your computer, click Start, Programs, NT Diagnostics and read the displayed system information.

**Install Microsoft XP Service Pack 1 or lower.** Later service packs can usually be added after LANtastic is installed.

- Install the network adapter drivers.** Install the drivers for your network adapter. See your adapter and/or operating system documentation for instructions.
- Check the system requirements.** See the table that starts below to make sure you meet the minimum system requirements for the type of LANtastic you're installing.

	LANtastic for Windows NT	LANtastic for Windows 95/98	LANtastic for Windows 3.x	LANtastic for DOS
Computer	486/66 or higher	486/66 or higher	386 or higher	8086 or higher
RAM	16MB (32MB recommended)	8MB (16MB recommended)	4MB	640K
O/S	Windows NT 4.0, 2000, XPsp1 or 2003 (32-bit versions only) with no service packs installed	Windows 95, 98 or 98-SE	DOS v5.0 or higher and Windows 3.1 or 3.11, running in Enhanced mode	DOS v5.0 or higher
Drive	CD-ROM or HD 3.5" floppy drive	CD-ROM or HD 3.5" floppy drive	CD-ROM or HD 3.5" floppy drive	CD-ROM or HD 3.5" floppy drive

(Continued)

	LANtastic for Windows NT	LANtastic for Windows 95/98	LANtastic for Windows 3.x	LANtastic for DOS
Monitor	VGA	VGA	VGA	VGA
Mouse	Yes	Yes	Yes	No
Disk Space	15MB (+2.5MB for Acrobat Reader)	10MB (+2.5MB for Acrobat Reader)	8MB (+2.5MB for Acrobat Reader)	7MB (+2.5MB for Acrobat Reader)
Other	64MB Virtual Memory Page		HP JetDirect – NDIS or ODI driver; NCP – ODI driver; SMB – NDIS or ODI driver.	HP JetDirect – NDIS or ODI driver; NCP – ODI driver; SMB – NDIS or ODI driver.

- Windows 3.x or DOS users – Check the FILES= setting.**  
Make sure the FILES= setting in the computer's CONFIG.SYS file is at least 60.
- DOS users –** Be sure to download the Acrobat Reader and the DOS files from the Online Library. In them you'll find valuable information and instructions not available anywhere else.

## Making installation disks

---

Even if you have the LANtastic CD-ROM, you may find that you need a set of installation diskettes. For example, you would need diskettes if you had to perform a remote installation on a computer without a CD-ROM drive. To create the disk images, you can copy the files from the LANtastic CD-ROM or purchase a set of diskettes from Artisoft by contacting the Artisoft Direct Team. Instructions appear on the Directory of Services you received with this product.

### Creating disk images from the CD-ROM

#### LANtastic installation files

To copy the LANtastic 8.0 installation files:

1. Format the required number of 1.44MB diskettes:
  - LANtastic for Windows NT = 3
  - LANtastic for Windows 95/98 = 3
  - LANtastic for Windows 3.x = 3
  - LANtastic for DOS = 2
2. Go to the ARTISOFT\ENG\LANTASTI directory of the CD-ROM.



There you'll see the following subdirectories:

WINNT, WIN9X, WIN3X and DOS

Then, within each of these subdirectories you'll find additional subdirectories – DISK1, DISK2, etc.

For example: ARTISOFT\ENG\LANTASTI\DOS\DISK1

3. Label each of your diskettes with the appropriate interface name and DISK number, then copy each of the subdirectories' contents to the appropriate diskette.

For example, to make LANtastic for DOS DISK1, put the CD into a CD-ROM drive and at the DOS prompt, type:

D: <Enter> (where D: is the CD-ROM drive letter you're using)

CD ARTISOFT\ENG\LANTASTI <Enter>

CD DOS <Enter>

CD DISK1 <Enter>

XCOPY \*.\* A: /s <Enter> (where A: is the floppy drive that contains your diskette).

4. Repeat step 3 for each LANtastic interface for which you want a set of installation diskettes.

### **Making diskettes for other products**

Disk images for Artisoft Alfie and WinBEEP 32 are also included on the LANtastic 8.0 CD-ROM. To make installation diskettes for these products:

1. Format the required number of 1.44MB diskettes:  
Artisoft Alfie = 3  
WinBEEP 32 = 6
2. Go to the ARTISOFT\ENG\[Product Name] directory on the CD-ROM where [Product Name] is the product for which you want to make diskettes.

There you'll see the following subdirectories:

DISK1, DISK2, etc.

3. Label each of your diskettes with the appropriate product name and DISK number, then copy each of the subdirectories' contents to the appropriate diskette.

4. Repeat step 3 for each product for which you want to make a set of installation diskettes.

For example, to make ALFIE\DISK1, put the CD into a CD-ROM drive and at the DOS prompt, type:

D: <Enter> (where D: is the CD-ROM drive letter you're using)

CD ARTISOFT\ENG\ALFIE <Enter>

CD DISK1 <Enter>

XCOPY \*.\* A: /s <Enter> (where A: is the floppy drive that contains your diskette).

# INSTALLING LANtASTIC FOR WINDOWS NT

## CHAPTER CONTENTS

Compatibility with other versions of Windows . . . . .	below
Differences from previous versions of LANtastic . . . . .	17
Removing a previous version of LANtastic . . . . .	18
Installing the software . . . . .	19
Running the LANtastic Custom Control Panel . . . . .	24
Restoring your LANtastic settings . . . . .	24
Post-installation tasks . . . . .	25
Troubleshooting during installation . . . . .	26

## Compatibility with other versions of Windows \_\_\_\_\_

LANtastic 8.01 for Windows NT is compatible with Windows NT 4.0, Windows 2000, Windows XP SP1 & Windows Server 2003 - 32-bit.

## Differences from previous versions of LANtastic \_\_\_\_\_

LANtastic for Windows NT's feature set is equivalent to that of LANtastic 7.0 for Windows 95. If you don't see a familiar feature on the Control Panel, look for it in the DOS-based LNET and LNET\_MGR programs that are included LANtastic 8.0. For example, LNET gives you the LNET LOGIN and LNET USE commands that you can use to create batch files to connect to servers and redirect drives. With the /WAIT switch that works with these commands, you can force a wait for a server to become available.

In LANtastic for Windows NT, many server settings are controlled automatically for optimal performance. You can click the Configure Server button on the Manage Servers page to customize some server settings. A few additional NET functions that aren't supported by the LNET program are explained in the online Help.

## Removing a previous version of LANtastic

---

### TIP...

If you have an evaluation copy of LANtastic 8.0 for Windows NT installed, and you want to upgrade to the full version, see the LANtastic Readme file for instructions.

**You don't need to uninstall the eval.**

---

If you have a previous installation of LANtastic on your computer when you run Setup, the program will detect LANtastic and prompt you to remove it. To do so, you'll need to run the Uninstall program as described under "Uninstalling LANtastic" on page 19.

After the Uninstall, Windows NT will remember your LANtastic drive and printer connections. However, your LANtastic accounts and Custom Control Panel settings (such as special buttons or colors) will be lost. If you want to preserve your LANtastic accounts and Custom Control Panel settings, perform the steps under "Installing the software," below and "Saving your Custom Control Panel configuration" on page 19, **before** you run the Uninstall.

**After** you've installed LANtastic 8.0, see "Restoring your LANtastic settings" on page 24 to restore your Accounts and Custom Control Panel configuration.

### Backing up the LANtastic Database

1. From the Manage Servers page of the Custom Control Panel, click Archive Configuration.
2. Specify the server whose settings you want to back up.  
To select a server other than the one showing in the Server to Backup field, click the down arrow or click Select. Then click the desired server.
3. Specify an archive file if you want to backup to a file other than the default (c:\lantasti\winnt\ldb\_data\archive.lbu).  
To do so, click Change Archive File and enter the path to the preferred archive file.
4. Type any comments in the Comment field (optional).
5. Verify that the archive file was created (optional).  
Click Apply, then click My Computer to look for the file on your hard drive. If the file is located on another computer, use Explorer to find it.
6. Click OK to back up the selected server's configuration.

## Saving your Custom Control Panel configuration

**Note...** You can skip this section if you didn't modify the LANtastic Custom Control Panel.

1. Close LANtastic for Windows NT.
2. Open a DOS box (click Start, Programs, MS-DOS Prompt) and change to the Windows NT folder on your hard drive (typically WINNT). Type `ren *.lcf *.abc<Enter>`.
3. Type `Exit` at the MS-DOS prompt to close the DOS box.

## Uninstalling LANtastic

- Click Start, Programs, LANtastic, Uninstall LANtastic for Windows NT.

The LANtastic Uninstall window appears.

- Click OK to begin the uninstall, then click Yes to confirm.
- When prompted, click OK to finish the uninstall process.

Ignore any messages regarding the manual removal of certain LANtastic for Windows NT files.

**Important...** Uninstall can't remove certain files until you restart the computer. **DO NOT** try to reinstall LANtastic for Windows NT on this computer before you've restarted it.

## Installing the software

---

Now that you've performed any necessary preliminary steps, installing LANtastic for Windows NT should be quick and easy. Plan on spending about 15 – 30 minutes on each computer. Perform the following steps on each of your Windows NT 4.0 computers that you want to be a part of your LANtastic network.

### Using the Autorun

The LANtastic CD-ROM provides an easy-to-use Autorun for Windows NT and Windows 95/98 computers. If the Autoplay option is enabled on your computer, the LANtastic CD-ROM will run automatically when you close the CD-ROM drive tray.

If the Autorun menu doesn't appear, your computer's Autoplay feature is probably disabled. If you'd still like to use the Autorun:

- Click Start, Run then type `D:\INSTALL` where D: is the letter of the CD-ROM drive you're using.

Or

- Run Windows Explorer and open the LANtastic CD-ROM, then double-click `INSTALL.EXE` in the CD's root directory.

## Installation steps

1. If the Windows NT computer is already running, click Start, Shutdown, Close all programs and log on as a different user.

2. Log into Windows NT with Administrator access.

**Note...** You can't install LANtastic for Windows NT unless you have Administrator access.

3. If any Windows NT programs ran at startup, shut them down now. To do so, press **Alt+Tab** to switch to the other applications and close them.

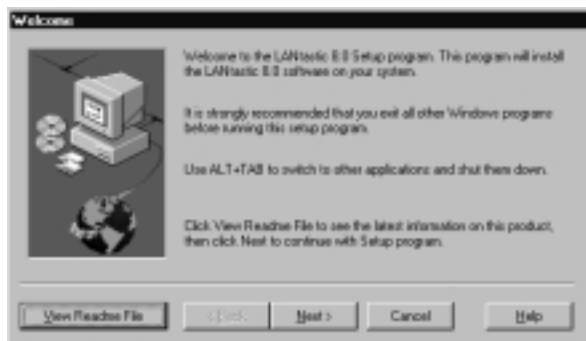
4. If you're installing from the CD-ROM:

- Put the CD-ROM in your CD-ROM drive. Momentarily, the LANtastic 8.0 Autorun menu appears. From there you can:
  - Click **LANtastic** to run the LANtastic 8.0 Setup program.
  - Click **Eval Software** to install one or more of the Artisoft evaluation-version products.
  - Click **View Readme** for information about LANtastic 8.0 that became available after the manuals and online Help were completed.
  - Click **Exit** to leave the Autorun menu.

If you're installing from diskettes:

- Insert Disk 1 into a floppy drive.
- Click Start, then Run.
- Type **A:\SETUP** where **A:** is the floppy drive you're using and click OK.

5. The Welcome window appears.



### TIP...

Make sure that you have Windows NT 4.0 Service Pack 3 or higher installed **before** you begin installing LANtastic 8.0.

### TIP...

For information on creating a set of installation disks, see "Making installation disks" on page 14.

Click View Readme File to read it now. When you're finished, close the file, then click Next.

Or

To continue without viewing the Readme, click Next.

6. The LANtastic License Agreement window appears.

Read the agreement, then click Yes if you accept the terms within. If you don't accept the terms, click No and Setup will end. You won't be able to install LANtastic until you click Yes.

7. The LANtastic License Verification window appears.



**TIP...**

When entering Serial Numbers and Verification Keys, valid characters are numbers 0 - 9 and letters A - F.

Enter your LANtastic for Windows NT Serial Number and Verification Key, then click Next. If you don't enter a Serial Number and Verification Key, Setup will install an evaluation copy of the software, which will expire in 45 days.

8. The LANtastic Setup Options window appears.



- By default the Windows NT computer name appears with an LT- prefix. This prefix makes the LANtastic for Windows NT networking computer name unique, as opposed to being the same as the Microsoft NT Networking computer name.

**Note...** It's strongly recommended that your Microsoft Networking computer name and your LANtastic for Windows NT computer name be different if you're using both types of networking on the same PC.

**TIP...**

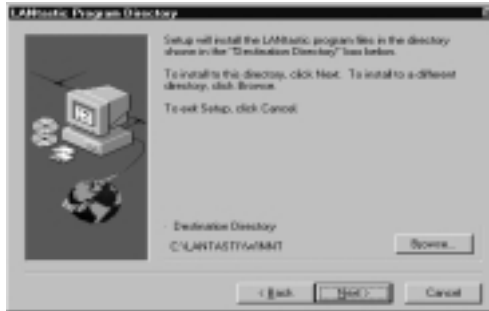
If you decide not to share drives and printers, then later change your mind, you can use the Windows NT Network Control Panel to add the LANtastic server component.

- By default, this computer will share its drives and printers (act as a LANtastic server.)

If you prefer not to share the drives and printers on this computer, clear the check box. You'll still be able to use other network computers' shared resources.

- Click Next to continue.

**9. The LANtastic Program Directory window appears.**



- Click Next if you want to accept the default LANtastic program folder (C:\LANTASTIC\WINNT).

Or

- Click Browse to select another folder and then click Next.

**10. The LANtastic Folder Name window appears.**

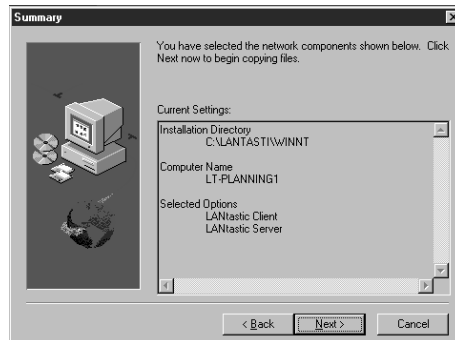


Setup will add program icons to the LANtastic folder that's created by default, or you can select an existing folder from the Existing Folders list or create a new one:

- To use the default program folder (LANtastic), click Next.
- To use an existing program folder, select it from the Existing Folders list, then click Next.
- To create a new program folder, type the name in the Program Folders box, then click Next.



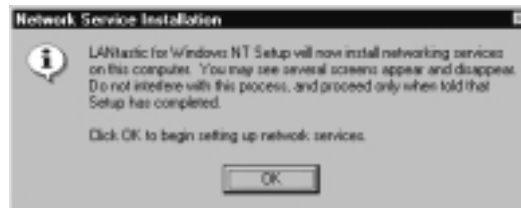
11. The Summary window appears.



Review the selections you made during Setup:

- If you want to change an option, click Back until you reach the window where you want to make a change.
- When you've finished making changes, click Next until you reach the Summary window, then when everything's correct, click Next to begin copying files.
- If you're installing from diskettes, insert each disk as prompted, then click Next.

12. The Network Service Installation window appears.



Click OK to have Setup begin installing Network Services.

**CAUTION!**

You may see several windows appear and disappear after you click OK. Don't interfere with this process. You won't need to perform any other actions until the LANtastic for NT Setup Complete window appears.



- Remove the CD-ROM or diskette, then click Restart.

## Running the LANtastic Custom Control Panel

---

**TIP...**

---

For more information about the LANtastic Custom Control Panel, see Chapter 2 of the *LANtastic for Windows NT User's Manual*.

---

1. Double-click the LANtastic shortcut icon on the Windows NT desktop, or click Start, Programs, LANtastic.
2. Wait for the program to add pages and buttons to the LANtastic Custom Control Panel.
3. If this is the first time you've installed LANtastic for Windows NT, and you chose to be a LANtastic server, the Confirm Resource Setup window appears. This window asks if you want Setup to add resources that will allow this computer to share its drives and printers.
  - **Click Yes** if you want Setup to scan your computer for sharable devices (such as your hard drive or CD-ROM drive) and create shared resources for them.
  - **Click No** if you prefer to create resources yourself at a later time. Note that until you manually create shared resources, no other LANtastic users will be able to access your hard drive, CD-ROM drive, etc. across the network.

## Restoring your LANtastic settings

---

If you removed a previous version of LANtastic before you installed LANtastic 8.0, and you backed up the LANtastic database (LDB) and your LANtastic Custom Control Panel settings, restore them now using the steps below.

**Note...** You cannot perform the restore operation from a remote computer. You must do the following steps while you are at the server whose settings you want to restore.

### Restoring the LANtastic database

1. Run the Custom Control Panel, then from the Manage Servers page, click Archive Configuration.
2. Click the Restore tab.
3. Specify the archive file from which you want to restore the LDB. By default it's C:\lantasti\winnt\ldb\_data\archive.lbu. To restore settings from a different archive file, click Change Archive File and enter the path to the file, then click Save.
4. Click OK to restore the server's configuration.
5. If you're also restoring your Custom Control Panel settings, go on to "Restoring your Custom Control Panel settings" on page 25. Otherwise, restart your computer now.

## Restoring your Custom Control Panel settings

1. Close LANtastic for Windows NT.
2. Open a DOS box (click Start, Programs, MS-DOS Prompt).
3. Change to the Windows NT folder on your hard drive (typically WINNT) and type `del *.lcf <Enter>`.  
If you're prompted to confirm, choose Yes.
4. Type `ren *.abc *.lcf<Enter>`.
5. Type Exit at the MS-DOS prompt to close the DOS box.
6. Restart your computer.

## Post-installation tasks

---

After you've finished installing LANtastic for Windows NT, you may want or need to perform one of more of the tasks in this section.

- ▼ **You want to move accounts and groups from a computer that's running an earlier version of LANtastic to a LANtastic for Windows NT computer. Or, you want to move accounts from a LANtastic for Windows 95 computer to a LANtastic for NT computer.**  
You can do this with the MIGRATE program. For best results, use MIGRATE **before** you create any accounts in LANtastic for Windows NT. See Chapter 2 of the *LANtastic for Windows NT User's Manual*.
- ▼ **You want to customize your LANtastic for Windows NT interface**  
You can use the Mizer program to change the look of the LANtastic Custom Control Panel. See Chapter 2 of the *LANtastic for Windows NT User's Manual*.
- ▼ **You need to reinstall LANtastic for Windows NT**  
If LANtastic for Windows NT is already installed on your computer, you must remove it before you can reinstall it. If you want to preserve your LANtastic accounts and Custom Control Panel settings, perform the tasks in the sections listed below:
  - "Backing up the LANtastic Database" on page 18
  - "Saving your Custom Control Panel configuration" on page 19

- “Uninstalling LANtastic” on page 19.
- “Installing the software” on page 19.
- “Restoring your LANtastic settings” on page 24.

## Troubleshooting during installation ---

If you receive an error message during installation, see the topic *Troubleshooting/Error Messages* in the Setup Help, or see the *LANtastic Troubleshooting Manual*. Both contain a list of installation-related errors and their solutions.

Also refer to the online Help for non-installation-related errors. There you'll find a list of the most commonly received LANtastic for Windows NT error messages.

Additional updated information on troubleshooting problems before and after installation may be available in the LANtastic Readme file, which you can open from the LANtastic Custom Control Panel.

# INSTALLING LANTASTIC FOR WINDOWS 95/98

## CHAPTER CONTENTS

Compatibility with other versions of LANtastic . . . . .	below
Removing a previous version of LANtastic . . . . .	27
Installing the software . . . . .	29
Removing unneeded network components . . . . .	34
Running the LANtastic Custom Control Panel . . . . .	34
Restoring your LANtastic settings . . . . .	35
About the primary logon box . . . . .	36
Post-installation tasks . . . . .	37
Troubleshooting during installation . . . . .	38

## Compatibility with other versions of LANtastic \_\_\_\_\_

To learn how LANtastic 8.0 works with other versions of LANtastic, see “Compatibility with other versions of LANtastic” on page 2.

## Removing a previous version of LANtastic \_\_\_\_\_

When you run the LANtastic 8.0 Setup program, it will detect the existence of a previous LANtastic installation and prompt you to remove it. To do so, follow the instructions under “Uninstalling LANtastic” on page 28.

**Important...** If you have LANtastic for Windows installed on a computer that previously ran Windows 3.x, but now runs Windows 95/98, you’ll need to follow the instructions in the section called “Removing LANtastic for Windows 3.x from a computer running Windows 95/98” on page 29.

Windows 95/98 will remember your drive and printer connections after LANtastic is removed. Your accounts and Custom Control Panel settings (such as special buttons or tabs) however, will be deleted.

If you would like to preserve your LANtastic accounts and Custom Control Panel settings, perform the following steps **before** you use Add/Remove Programs. Then, **after** you've installed LANtastic 8.0, see "Restoring your LANtastic settings" on page 35.

### Backing up the LANtastic Database

1. From the Manage Servers page of the Custom Control Panel, click Archive Configuration.
2. Specify the server whose settings you want to back up.  
To select a server other than the one showing in the Server to Backup field, click the down arrow or click Select. Then click the desired server.
3. Specify an archive file if you want to backup to a file other than the default (C:\LANTASTI\WIN95\LDB\_DATA\ARCHIVE.LBU).  
To do so, click Change Archive File and enter the path to the preferred archive file.
4. Type any comments in the Comment field (optional).
5. Verify that the archive file was created (optional).  
Click Apply, then click My Computer to look for the file on your hard drive. If the file is located on another computer, use Explorer to find it.
6. Click OK to back up the selected server's configuration.

### Saving your Custom Control Panel configuration

**Note...** You can skip this section if you didn't modify the LANtastic Custom Control Panel.

1. Close LANtastic for Windows 95/98.
2. Open a DOS box (click Start, Programs, MS-DOS Prompt) and change to the Windows 95/98 folder on your hard drive (typically WINDOWS). Type `ren *.lcf *.abc<Enter>`.
3. Type Exit at the MS-DOS prompt to close the DOS box.

### Uninstalling LANtastic

- Click Start, Programs, LANtastic, Uninstall LANtastic for Windows 95/98.  
The LANtastic Uninstall window appears.
- Click OK to begin the uninstall, then click Yes to confirm.
- When prompted, click OK to finish the uninstall process.

Ignore any messages regarding the manual removal of certain LANtastic for Windows NT files.

**Important...** Uninstall can't remove certain files until you restart the computer. **DO NOT** try to reinstall LANtastic for Windows NT on this computer before you've restarted it.

## Removing LANtastic for Windows 3.x from a computer running Windows 95/98

The LANtastic Uninstall program can't remove LANtastic in this situation. Instead, follow the steps below:

1. Use a text editor such as Notepad, to open your STARTNET.BAT or AUTOEXEC.BAT file.
2. Remark out (REM) the line **CALL C:\LANTASTI\STARTNET.BAT** so the line reads **REM CALL C:\LANTASTI\STARTNET.BAT**.
3. Save and close the file, then open your CONFIG.SYS file.
4. REM out any line that includes the text **DEVICE=C:\LANTASTI** so the line reads **REM DEVICE=C:\LANTASTI...**
5. Save and close the file, then open your WIN.INI file.
6. Delete the text **C:\LANTASTI\WNET.EXE** from the **LOAD=** line. Don't delete any other text from this line.
7. Save and close the file, then restart your computer.

## Installing the software

---

Now that you've performed any necessary preliminary steps, including properly configuring and installing your network adapter, installing LANtastic for Windows 95/98 should be quick and easy.

**Important...** If you decide to cancel the installation at any time during the process, the setup may continue and you may get a series of error messages. If this occurs, you must run Setup again and use the Add/Remove Programs utility to remove the LANtastic for Windows 95/98 networking components. After you've solved whatever problem caused you to cancel installation, run Setup again.

## Using the Autorun feature

The LANtastic CD-ROM provides an easy-to-use Autorun for Windows NT and Windows 95/98 computers. If the Autoplay option is enabled on your computer, the LANtastic CD will run automatically when you close the CD-ROM drive tray.

If the Autorun menu doesn't appear, your computer's Autoplay feature is probably disabled. If you'd still like to use the Autorun:

- Click Start, Run then type **D:\INSTALL** where D: is the letter of the CD-ROM drive you're using.

Or

Run Windows Explorer and open the LANtastic CD-ROM, then double-click **INSTALL.EXE** in the CD's root directory.

## Installation steps

1. If any Windows 95/98 programs are running, shut them down now.
2. **If you're installing from the CD-ROM:**
  - Put the CD-ROM in your CD-ROM drive. Momentarily, the LANtastic 8.0 Autorun menu appears. From there you can:
    - Click **LANtastic** to run the LANtastic 8.0 Setup program.
    - Click **Eval Software** to install one or more of the Artisoft evaluation-version products.
    - Click **View Readme** for information about LANtastic 8.0 that became available after the manuals and online Help were completed.
  - Click **Exit** to leave the Autorun menu

**If you're installing from diskettes:**

- Insert Disk 1 into a floppy drive.
- Click Start, then Run.
- Type **A:\SETUP** where A: is the floppy drive you're using and click OK.

### TIP...

---

For information on creating a set of installation disks, see "Making installation disks" on page 14.

---



3. The Welcome window appears.



To see the latest information on LANTASTIC for Windows 95/98, click View Readme File. When you've finished reading the file, close it, then click Next.

Or

If you'd rather continue with the installation and view the Readme file later, click Next.

4. The License Agreement window appears. Read the agreement, then click Agree if you accept with the terms within. If you disagree with the terms, click Cancel and Setup will end. You won't be able to install LANTASTIC until you click Agree.

5. The LANTASTIC License Verification window appears.

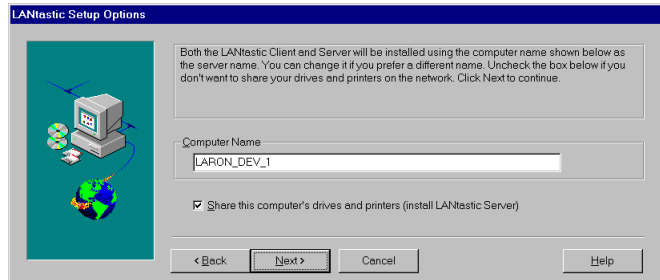


**TIP...**

When entering Serial Numbers and Verification Keys, valid characters are numbers 0 - 9 and letters A - F.

Enter the serial number and verification key from the registration card that came in your package, then click Next.

6. The LANtastic Setup Options window appears.



- By default the Windows 95/98 computer name appears with an LT- prefix. This prefix makes the LANtastic for Windows 95/98 networking computer name unique, as opposed to being the same as the Microsoft Networking computer name.

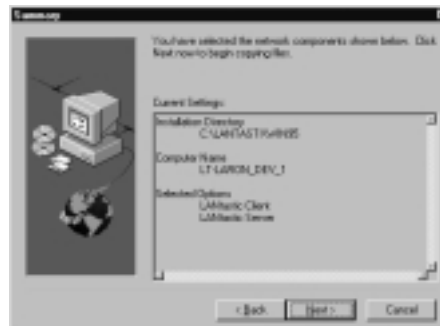
**Note...** It's strongly recommended that your Microsoft Networking computer name and your LANtastic for Windows 95/98 computer name be different if you're using both types of networking on the same PC.

- By default, this computer will share its drives and printers (act as a LANtastic server.)

If you prefer not to share the drives and printers on this computer, clear the check box to deselect this option. You'll still be able to use the drives and printers on other network computers.

- Click Next to continue.

7. The Summary window appears.



- At the Summary window, review your selections. If you want to change an option, click Back until you reach the window where you want to make a change. When you're finished making changes, click Next until you're returned to the Summary window.
- When everything's correct, click Finish.

**Note...** If you haven't already installed an adapter driver, the Select Network Adapters window appears. Follow the instructions in that window, then click OK. For driver selection guidelines, see the instructions in Hardware.pdf in the Online Library. **After software installation is complete, you'll need to follow the steps under "Removing unneeded network components" on page 34.**

8. If prompted, insert the specified diskettes and click OK.

**Note...** If you're missing any required files from your Windows system directory, you may be asked to insert your Windows 95/98 CD-ROM or diskettes. The instructions on the screen will guide you through this process.

9. When Setup finishes copying files, Windows builds a driver information database and adds the LANtastic network component to Windows 95/98. Then the LANtastic 8.0 Setup Complete window appears.

Remove the LANtastic CD-ROM or diskette, then click Restart.

- If the Windows 95/98 Enter Network Password logon box appears, enter your user name and an optional password.
- To make the LANtastic logon box appear the next time you start up your computer, follow the instructions under "About the primary logon box" on page 36.

**Note...** If your computer fails to restart, or if you receive an error message, turn the computer off, then back on and continue with "Removing unneeded network components".

## Removing unneeded network components ---

**Important...** Nearly everyone needs to perform the steps in this section in order for LANtastic for Windows 95/98 to function correctly.

However, if you want to use the Microsoft Client to connect to Microsoft servers or if you want to use the IPX/SPX protocol to connect to NetWare servers at the same time you're running LANtastic for Windows 95/98, the steps in this section aren't necessary. Instead, turn off multicast addressing on each LANtastic computer in your network, as described in the "Troubleshooting LANtastic for Windows 95/98 immediately after installation" section of the Readme file.

To remove the network components that LANtastic doesn't use:

1. Right-click the Network Neighborhood icon on your desktop, then click Properties on the pop-up menu. On the Configuration page, you'll see a list of currently installed network components.
2. If you see any of the following client and protocol components, **remove them in the exact order shown here**. If they don't appear in the list, or you've decided you need them (for reasons mentioned in the "Important" paragraph above) skip this step and go on to "Running the LANtastic Custom Control Panel".
  - Click Client for NetWare, then click Remove.
  - Click Client for Microsoft Networks, then click Remove.
  - Click IPX/SPX-compatible protocol, then click Remove.
  - Click NetBEUI, then click Remove.

Click OK, then click Yes to restart your computer and proceed to "Running the LANtastic Custom Control Panel" on page 34.

### **WARNING!**

---

Removing the components in an order different from this can make your network cease to operate!

---

## Running the LANtastic Custom Control Panel ---

1. Double-click the LANtastic shortcut icon or click Start, Programs, LANtastic.
2. Wait for the program to add pages and buttons to the LANtastic Custom Control Panel.

3. If this is the first time you've installed LANtastic for Windows 95/98, and you chose to be a LANtastic server, the Confirm Resource Setup window appears. This window asks if you want Setup to add resources that will allow this computer to share its drives and printers.
  - **Click Yes** if you want Setup to scan your computer for sharable devices (such as your hard drive or CD-ROM drive) and create shared resources for them.
  - **Click No** if you prefer to create resources yourself at a later time. Note that until you manually create shared resources, no other LANtastic users will be able to access your hard drive, CD-ROM drive, etc. across the network

## Restoring your LANtastic settings

---

If you removed a previous version of LANtastic before you installed LANtastic 8.0, and you backed up the LANtastic database (LDB) and your LANtastic Custom Control Panel settings, restore them using the steps below.

**Note...** You can't perform the restore operation from a remote computer. You must do the following steps while you are at the server whose settings you want to restore.

### Restoring the LANtastic database

1. Run the Custom Control Panel, then from the Manage Servers page, click Archive Configuration.
2. Click the Restore tab.
3. Specify the archive file from which you want to restore. By default it's C:\LANTASTI\WIN95\LDB\_DATA\ARCHIVE.LBU. To restore settings from a different archive file, click Change Archive File and enter the path to the file, then click Save.
4. Click OK to restore the server's configuration.
5. If you're also restoring your Custom Control Panel settings, go on to "Restoring your Custom Control Panel settings" on page 35. Otherwise, restart your computer now.

### Restoring your Custom Control Panel settings

1. Close LANtastic for Windows 95/98.
2. Open a DOS box (click Start, Programs, MS-DOS Prompt).

3. Change to the Windows 95/98 folder on your hard drive (typically WINDOWS) and type `del *.lcf <Enter>`.  
If you're prompted to confirm, choose Yes.
4. Type `ren *.abc *.lcf<Enter>`.
5. Type `Exit` at the MS-DOS prompt to close the DOS box.
6. Restart your computer.

## About the primary logon box

---

By default, you'll log on to the network through the LANtastic for Windows 95/98 primary logon box. This box, which appears when you start up your computer, displays your username and prompts you for your password.

Alternatively, you can choose to bypass the primary logon box. By doing so, you can log on to the network without entering a password, which may help avoid problems with some remote dial-in software.

To log on and bypass the primary logon box:

1. Click Start, Settings, Control Panel. Then double-click Network.
2. If you removed the Microsoft Client in the section called **"Removing unneeded network components"** on page 34, click Add and follow the bulleted steps below.
 

**Note...** If you didn't remove the Microsoft Client, skip to step 3.

  - From the list in the Select Network Component Type dialog box, click Client, then click Add. The Select Network Client dialog box appears.
  - In the Manufacturers list, click Microsoft. In the Network Clients list, click Client for Microsoft Networks, OK.
3. Click the arrow to the right of the Primary Network Logon list box, then click Client for Microsoft Networks.
4. Click OK, then click Yes to restart your computer.
5. When it restarts, at the Enter Network Password dialog, log in with the user name and password that you've been using.
6. Click Start, Settings, Control Panel. Then double-click the Network icon.
7. At the Primary Network Logon drop-down list box, click Windows Logon. Click OK, then click No when asked if you want to restart your computer.

8. In the Control Panel, double-click the Passwords icon. The Passwords Properties dialog box appears.
9. Click Change Windows Password, then type in your old password and press Enter. Your cursor goes to the New Password field. Press Enter twice, which sets it for **No Password**. (The second Enter clicks OK.)
10. Click Close at Passwords Properties.
11. Restart the computer, and it should bypass the primary network log-on prompt.
12. If you don't need the Client for Microsoft Networks, you can remove it now. (Double-click the Network icon, click Microsoft Client, click Remove, OK and restart your computer.)

## Post-installation tasks

---

After you've finished installing LANtastic for Windows 95/98, you may want or need to perform one of more of the following tasks:

- ▼ **You want to move accounts and groups from a computer that's running an earlier version of LANtastic to a LANtastic for Windows 95/98 computer. Or, you want to move accounts from a LANtastic for Windows 95 or NT computer to a LANtastic for 95/98 computer.**  
You can do this with the MIGRATE program. For best results, use MIGRATE **before** you create any accounts in LANtastic for Windows 95/98. See "Converting LANtastic account information with MIGRATE" in the LANtastic for Windows 95/98 User's manual.
- ▼ **You want to customize your LANtastic for Windows 95/98 interface**  
You can use the Mizer program to change the look of the LANtastic Custom Control Panel. See *Chapter 2 of the LANtastic for Windows 95/98 User's Manual*.
- ▼ **You want to uninstall LANtastic for Windows 95/98**  
To remove LANtastic for Windows 95/98 from your computer:
  - Click Start, Programs, LANtastic, Uninstall LANtastic for Windows 95/98.  
The LANtastic Uninstall window appears.
  - Click OK to begin the uninstall, then click Yes to confirm.
  - When prompted, click OK to finish the uninstall process.

### TIP...

---

If you plan to reinstall LANtastic after you uninstall it, you'll want to follow the steps under "You need to reinstall LANtastic for Windows 95/98" on the next page, instead of using the steps in this section.

---

Ignore any messages regarding the manual removal of certain LANtastic for Windows NT files.

**Important...** Uninstall can't remove certain files until you restart the computer. **DO NOT** try to reinstall LANtastic on this computer before you've restarted it.

▼ **You need to reinstall LANtastic for Windows 95/98**

If LANtastic for Windows 95/98 is already installed on your computer, you must remove it before you can reinstall it. If you want to preserve your LANtastic accounts and Custom Control Panel settings, perform the tasks in the sections listed below. See these sections:

- "Removing a previous version of LANtastic" on page 27.
- "You want to uninstall LANtastic for Windows 95/98" on page 37.
- "Installing the software" on page 29.
- "Restoring your LANtastic settings" on page 35.

## Troubleshooting during installation \_\_\_\_\_

If you received an error message during installation, refer to the *LANtastic Troubleshooting Manual*. It contains a list of installation-related errors and their solutions.

For non-installation-related errors, refer to the file in the Online Library called *Errs\_95.pdf*. It contains a complete list of the most commonly received LANtastic for Windows 95/98 error messages. For instructions on using the Online Library PDF files, see "Using the Online Library" on page 6.

Additional updated information on troubleshooting problems before and after installation may be available in the Readme file, which you can open from the LANtastic Custom Control Panel.



# INSTALLING LANTASTIC FOR WINDOWS 3.X

## CHAPTER CONTENTS

Compatibility with other versions of LANtastic . . . . .	below
Installing the software . . . . .	39
Making permanent connections . . . . .	46
Post-installation tasks . . . . .	48
Troubleshooting during installation . . . . .	49

Now that you've performed any necessary preliminary steps, installing LANtastic for Windows 3.x should be quick and easy.

To network your Windows 3.x computers using the LANtastic for Windows 3.x interface, you must install the LANtastic for Windows software on each Windows 3.x computer.

## Compatibility with other versions of LANtastic \_\_\_\_\_

To learn how LANtastic 8.0 works with other versions of LANtastic, see "Compatibility with other versions of LANtastic" on page 2.

## Installing the software \_\_\_\_\_

1. If any Windows 3.x programs are running, shut them down now. To do so, press **Alt+Tab** to switch to the other applications and close them.
2. If you're installing from the CD-ROM:
  - Put the CD-ROM in your CD-ROM drive.
  - From Windows Program Manager or the File Manager window, select the File menu and choose Run.
  - In the Run window, type **D:INSTALL**, where **D:** is the letter assigned to the CD-ROM drive, then click OK.

**TIP...**

For information on creating a set of installation disks, see "Making installation disks" on page 14.

**If you're installing from diskettes:**

- Insert Disk 1 into a floppy drive.
- From Windows Program Manager or the File Manager window, select the File menu and choose Run.
- In the Run window, type **A:SETUP** where **A:** is the floppy drive you're using and click OK.

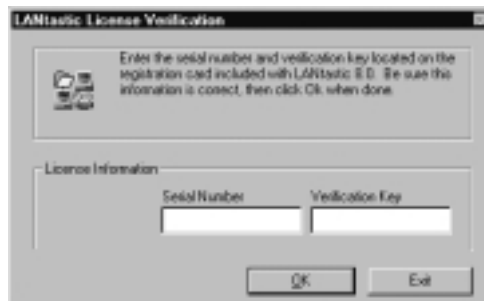
**3. The Welcome window appears.**



Read the information, then click Next.

**4. The License Agreement window appears. Read the agreement, then click OK if you accept the terms within. If you disagree with the terms, click Cancel and Setup will end. You won't be able to install LANtastic until you click Agree.**

**5. The LANtastic License Verification window appears.**



Enter the Serial Number and Verification Key from the registration card that came in your package, then click OK.

**Note...** When entering Serial Numbers and Verification Keys, valid characters are numbers 0 - 9 and letters A - F.

**TIP...**

LANtastic for DOS automatically installs with LANtastic for Windows 3.x. So, you can use either interface on your Windows 3.x computers.

6. The Registration window appears.



Type your name and company's name, then click Continue.

7. The Registration Confirmation window appears.

Review the information displayed. If it's correct, click **Yes**. If you need to change any information, click **No** and repeat step 6.

8. The LANtastic Setup window appears.



At this window you'll make a number of choices (see the explanations below) about how you want LANtastic installed.

Click the appropriate buttons and enter information where requested, then click OK.

- **LANtastic Upgrade** – If a previous version of LANtastic is detected, the LANtastic Upgrade options will be available.
  - The **Keep Existing Settings** option tells Setup to preserve the pre-existing LANtastic settings, and add the new functionality, programs and features.
  - The **Replace Existing Settings** option will cause Setup to overwrite the pre-existing LANtastic settings and files, and replace them with the features and settings you specify during this installation.

- **Install To** – By default, LANtastic is installed in the C:\LANTASTI program directory on your computer's hard drive, and stores its settings in the control directory called C:\LANTASTI.NET.

To specify a different program and/or control directory, click the appropriate Change button and enter the new information in the window that appears.

- **LANtastic Files to Install** – Select the type of installation you want to perform:

- **All LANtastic files** – This option installs the full set of LANtastic files, including the LANtastic Server program. With this type of installation you'll be able to access drives, printers and resources on other computers, as well as make your own drives, printers and resources available to other network users. This is the typical installation type.

**Note...** For your computer to function as a LANtastic server, you must select "Share this Computer's Drives and Printers" during installation, in addition to selecting the All LANtastic Files option.

- **Workstation files only** – This option installs those the LANtastic files necessary to let your computer access the files on other computer's. You won't be able to share this computer's drives, printers or other resources unless you reinstall LANtastic and select All LANtastic Files. This option requires less disk space than the All LANtastic Files option.
- **Floppy Files (1.2MB)** – This option installs only those files needed to start up a LANtastic workstation. You won't be able to share this computer's drives, printers or other resources unless you reinstall LANtastic and select All LANtastic Files. You will, however, be able to use LANtastic's NCP/SMB support. The files copied during this installation type will fit on a high-density, 1.44MB, bootable floppy disk.
- **Tiny floppy (360K)** – This option installs the bare minimum files needed to start up a LANtastic workstation. You won't be able to share this computer's resources unless you reinstall LANtastic and select All LANtastic Files. In addition, you won't be able to use a number of LANtastic's features, including NCP/SMB support and HP JetDirect. The files copied during this installation type will fit on a low-density, 360K, bootable floppy disk.

**TIP...**

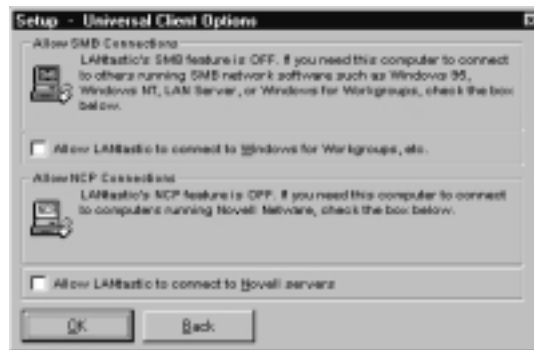
---

You must select the All LANtastic Files option if you want to use your computer as an installation server.

---

- **Computer Name** – Type in the name you want to use to identify this computer on the network. Using a variation of your own name, such as Howards\_PC, or a descriptive name, such as PAYROLL can make it easier to remember the name.
- **Max number of users** – Enter a value (between 1 and 240) that most closely matches the number of other computers that will connect to this server. Note that the higher the value, the more memory LANTastic will use.
- **Share this computer’s drives and printers (run SERVER)** – Select the check box if you want to make the drives, printers and other resources on this computer available to other network users. If you don’t want to share your resources, make sure the check box is clear.

9. The Universal Client Options window appears:



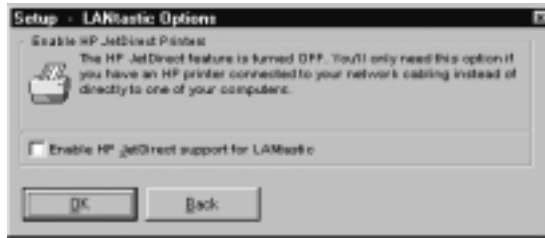
From this window, decide whether you need to enable SMB or NCP support, then click OK.

- If this computer needs to connect to other computers running SMB network software such as Microsoft Windows 95, Windows NT, Windows for Workgroups, or IBM LAN Server, select the Allow LANTastic to connect to Windows for Workgroups, etc. check box. Otherwise, make sure the check box is clear.

**Note...** If this computer will connect to computers running LANTastic 8.0 for Windows NT or Windows 95/98, you do not need to enable SMB support.

- If this computer needs to connect to Novell NetWare file or printer servers, select the Allow LANTastic to connect to Novell servers check box. Otherwise, make sure the check box is clear.

10. The LANtastic Options window appears:



If there is an HP JetDirect printer on your network, and this computer is a server that will share that printer, select the Enable HP JetDirect support for LANtastic check box.

Otherwise, make sure the check box is clear.

**Note...** Enabling the HP JetDirect support for LANtastic option will force the Setup program to install an NDIS driver for this computer's network adapter.

11. The Network Adapter Setup window appears:



Use the guidelines below to specify the type of adapter installed in your computer and the required driver, then click OK.

- If you enabled NCP support in step 9, and you have a NodeRunner or NodeRunner Pro adapter in your computer, select the corresponding radio button. Setup will install the ODI driver for the adapter.
- If you have another type of adapter installed, see your adapter documentation for instructions on installing its ODI driver.

12. The LANtastic Setup Summary window appears:



This window shows you a summary of the selections you made.

- To make any changes, click the appropriate button to return to the corresponding Setup window. When you've finished making changes in each Setup window, click OK until you're returned to the Summary window.
    - The Back button takes you to the previous window. The Top button takes you to the start of the Setup sequence.
    - The Disk Space button opens the LANtastic Disk Space Summary window.
13. When all information is correct, click Install. Setup will begin to copy files to your computer.
- If you're installing from diskettes, insert the numbered disks as prompted, then click OK after each one.

**Note...** If you get the error message: "Sharing violation on Drive C:" (where C: is the drive on which you're installing LANtastic 7.0) while Setup is copying files, and you have installed LANtastic 8.0 previously this computer, remove the REMIND.EXE command from the LOAD= line in your C:\WINDOWS\WIN.INI file. After doing so, reboot the computer and run Setup again.

14. The Permanent Connections window appears.
- If you want Setup to let you make permanent connections after restarting, select the check box then click Finish.
    - If you prefer to make your connections later, make sure the check box is clear, then click Finish.

**TIP...**

If your computer fails to restart, or if you receive an error message, turn the computer off, then back on and continue with step 16.

15. The Installation Complete window appears.
  - To view the Readme file now, click View Readme. When you're done, click OK to close the file and click Restart to activate LANTastic, or click Return to Windows to exit Setup. You must restart your computer before you can begin using LANTastic.
  - To restart your computer without viewing the Readme file, click Restart.
  - To exit Setup and return to Windows, click Return to Windows. You must restart your computer before you can begin using LANTastic.
16. The Permanent Connections Management window appears.



Follow the steps in the next section to make permanent drive and printer connections.

## Making permanent connections

**Hint...** Before you set up permanent connections, wait until LANTastic is installed on all of the network PCs, and they've been restarted. This will let you see all computers available for connection.

### To make a drive connection

1. Click connect to other Computers' Drives <Enter>.

The Drive Connections to Other Computers window appears. This window shows the drive letters on your computer that are in use, such as C: for your hard drive. It also shows the drive letters that can be used to connect to drives on other computers. Typically the available letters are E through Z.

2. Click the letter you want to use and press <Enter>.

The Connect to Computer window appears. This window shows the computers on your network that are currently available for you to connect to. Your own computer will also appear in the list if it is set up as a LANTastic server.

**TIP...**

Permanent connection settings are stored in a file called CONNECT.BAT. This file typically resides in the \LANTASTI directory.



3. Click the name of a computer that you want to connect to.  
When asked if you want to use that computer's clock, say No, then press <Enter>.
4. From the next window, select the resource that you want to use and press <Enter>. This is typically the C-DRIVE.  
The connection appears in the Drive Connections to Other Computers window.
5. Repeat these steps for each drive connection you want to make at this time.
6. When you're finished making drive connections, press Esc.

### To make a printer connection

1. Click Connect to Other Computers' Printers, then press <Enter>.  
The Printer Connections to Other Computers window appears. This window shows the printer ports on your computer that are in use. It also shows the printer ports that can be used to connect to printers on other computers.
2. Click the port you want to use to make a connection and press <Enter>.  
The Connect to Computer window appears. This window shows the computers on your network that are available for you to connect to. Your own computer will also appear in the list.
3. Click the name of a computer that you want to connect to.
4. From the next window, select the printer resource that you want to use and press <Enter>. This is typically @PRINTER.  
The connection appears in the Printer Connections to Other Computers window.
5. Repeat the steps for each printer connection you want to make at this time.
6. When you're finished making all connections, press Esc.
7. To have these connections become active each time you start your computer, click Make the Current Connections Permanent and press <Enter>.
8. Press <Enter> at the confirmation window.
9. To prevent the Permanent connections window from appearing each time you start your computer, click Show this menu on Startup and toggle the option to DISABLE.

10. To set color preferences, press F8 and make a selection from the list then press <Enter>.
11. To delete a connection, click the connection, then press Del.
12. To exit the Permanent Connections window, press Esc.

## Post-installation tasks

---

After you've finished installing LANtastic for Windows 3.x, you may want or need to perform one of more of the tasks in this section.

▼ **You selected the Keep Existing Settings option**

You'll need to use a text editor to integrate the commands shown in a set of example files into your original system files. LANtastic created these files during installation and they are named CONFIG.NEW and AUTOEXEC.NEW. They're located in the same directories as your original files.

You may have to edit your STARTNET.BAT file so that LANcache loads before SERVER. The LANcache program included with LANtastic 8.0 won't load if it sees that SERVER is already running.

▼ **You selected NCP (Novell NetWare) support**

If you selected NCP support and your PC has a network adapter card other than a NodeRunner Pro or NodeRunner installed, you'll need to edit your configuration files so they can work properly with your adapter. See the file called Clent.pdf in the Online Library for more information.

If you selected NCP support and your computer has a NodeRunner Pro or NodeRunner adapter installed, the adapter is automatically set up for NCP support. See the file called Clent.pdf in the Online Library for more information.

**Important...** If you want to use Remote Booting or CS Print Support on a LANtastic computer that has NCP support enabled, you'll have to edit several files after installation. This occurs because you chose NCP support and Setup automatically created an ODI/NDIS stack. The creation of this stack disables Remote Booting and CS Print Support capability. Information on editing the files appears in the file called EXAMPLES.TXT in your LANtastic installation directory (typically C:\LANTASTI).

**TIP...**

---

In addition to the tasks listed in this section, see "SYSTEM.INI and WIN.INI file changes" on page 62, to see if the information there applies to you.

---

- ▼ **You changed the adapter's IRQ setting**  
If you changed the factory pre-set IRQ for your network adapter card and you'll be running Windows 3.x, you must perform the steps under "SYSTEM.INI and WIN.INI file changes" on page 62. See the information in the LANTASTIC section on page 64.
- ▼ **You're using memory management software**  
If you're using memory management software such as EMM386 (shipped with DOS 5.0 and above) or QEMM, you may have to perform additional steps. For more information, including general guidelines about using memory management software with LANtastic, see the file called Memry\_dw.pdf in the Online Library.
- ▼ **You selected HP JetDirect printer support during Setup**  
See "Adding an HP JetDirect printer to your network" on page 65.
- ▼ **You want to print from Windows 3.x applications**  
If you've set up your computer to use another PC's printer, and you want to send print jobs to it from Windows 3.x applications, follow the steps in "Printing from Windows 3.x applications" on page 61.

## Troubleshooting during installation

---

If you received an error message during installation, refer to the *LANtastic Troubleshooting Manual*. It contains a list of installation-related errors and their solutions.

For non-installation-related errors, refer to the file in the Online Library called Errs\_dw.pdf. It contains a complete list of the most commonly received LANtastic for Windows and DOS error messages. For instructions on using the Online Library PDF files, see "Using the Online Library" on page 6.

Additional updated information on troubleshooting problems before and after installation may be available in the Readme file.



# INSTALLING LANTASTIC FOR DOS

## CHAPTER CONTENTS

Compatibility with other versions of LANtastic . . . . .	below
Installing the software . . . . .	51
Making permanent connections . . . . .	55
Using INSTALL switches . . . . .	57
Post-installation tasks . . . . .	58
Troubleshooting during installation . . . . .	59

The installation instructions in this chapter are for DOS-only computers, or for Windows 3.x computers on which you want to install only the DOS version of LANtastic in order to save disk space. If you install LANtastic for Windows, you get both the DOS and Windows 3.x LANtastic software. For instructions on installing LANtastic for Windows 3.x, see Chapter 6 of this manual.

## Compatibility with other versions of LANtastic \_\_\_\_\_

To learn how LANtastic 8.0 works with other versions of LANtastic, see “Compatibility with other versions of LANtastic” on page 2.

## Installing the software \_\_\_\_\_

Now that you’ve performed any necessary preliminary steps, including making sure you have at least 499K of conventional RAM available, installing the LANtastic for DOS software should be quick and easy.

**Important...** Check the section called “Using INSTALL switches” on page 57. It explains certain instances in which you should use installation switches when installing LANtastic for DOS.

For example, you would want to use the /MONO switch when installing LANtastic on a computer with a monochrome monitor.

Make sure you're at the actual DOS prompt when you start the installation; don't run the Setup program from a DOS box.

**1. If you're installing from the CD-ROM:**

- Put the CD-ROM in your CD-ROM drive.
- Change directories to your CD-ROM drive, then type **D:\INSTALL<Enter>** where D: is the letter of the CD-ROM drive.

**If you're installing from diskettes:**

- Insert Disk 1 into a floppy drive.
- From the DOS prompt type **A:\INSTALL** where A: is the floppy drive you're using **<Enter>**.

**TIP...**

---

For information on creating a set of installation disks, see "Making installation disks" on page 14.

---

2. The LANtastic 8.0 Installation screen appears. Press **Enter** to continue.
3. The License Agreement screen appears. Press **Enter** to read the agreement. When you're finished reading the agreement, press **Esc** to return to the previous screen. Use your arrow keys to select the **I AGREE** option if you agree with the terms, then press **Enter**.

If you don't accept the terms, select the **I DISAGREE** option and Setup will end. You won't be able to install LANtastic unless you select **I AGREE**.

4. In a few moments the LANtastic 8.0 Installation Welcome screen appears. It's a good idea to read the Readme.txt file at this time. Use your arrow keys to select the **Readme** option, then press **Enter**. The Readme file appears. Press **Esc** to return to the Welcome screen, then press **Enter** to continue.
5. In a few moments the Enter Serial Number screen appears. Type in the serial number from the registration card you received in your package, then press **Enter** to continue.
6. The Enter Verification Key screen appears. Type in the verification key from the registration card you received in your package, then press **Enter** to continue.

**TIP...**

---

When entering Serial Numbers and Verification Keys, valid characters are numbers 0 - 9 and letters A - F.

---

7. The Computer Name screen appears. Type in the name you want to use for this computer. The name can contain up to 15 characters. To make it easier to identify the computer, you may want to use a variation of your own name, such as WARRENS\_486 or one that's descriptive, such as PAYROLL. Press **Enter** to continue.
8. The Enter Target Drive screen appears. Select the drive on your computer where you want LANtastic to be installed. This is typically the C: drive on most computers, but you can select any drive that appears in the list by using your arrow keys. Press **Enter** to continue.
9. The Enter Directory screen appears. This is where you specify the directory in which you want LANtastic installed:
  - To accept the default installation directory (\LANTASTI), press **Enter**.
  - To specify a different directory name, type it in the Enter Directory field, then press **Enter** to continue.
10. When the Share Drives and Printers screen appears, specify whether you want to share this computer's resources:
  - If you want to share your drives and printers with other people, select the SHARE option, then press **Enter** to continue. This computer then becomes a LANtastic server.
  - If you don't want to share your drives and printers with other people, select the DO NOT SHARE option, then press any key to continue. This computer then becomes a LANtastic workstation (client). As such, you'll still be able to use the shared resources on other network computers (servers).
11. The Increase Computer Connections screen appears. Specify the number of connections needed for this computer:
  - If your computer doesn't need to connect to more than ten other computers, press **Enter** to select the KEEP option.
  - If your computer will connect to more than ten other computers, select the INCREASE value that most closely matches your needs and press **Enter** to continue.

12. The Additional Options screen appears. Decide whether you need any of the additional LANtastic options described below. To select an option, highlight it and press the space bar. After you've selected all the options you want, press **Enter**.
  - The Add JetDirect Support option lets you share an HP JetDirect printer that's on your network.
  - The Client to... options allow you to connect to and use Novell and/or Microsoft servers.
13. The Select Adapter screen appears. Select the type of support that's required for your network adapter and any additional options you selected, then press **Enter**.
14. The Summary screen appears. Review the information, then:
  - If the specifications are acceptable, select OK <Enter> to perform installation.
  - If you need to make changes to one or more of your specifications, select the Go Back option. Setup remembers your previous selections, so accept the defaults for each screen until you reach the one(s) that you want to change. Make the correction(s), then continue to accept the defaults until you reach the Summary screen. Select OK to perform installation <Enter>.
15. The Finishing Up screen appears. Review the information regarding your system files, then press any key to continue or press **Esc** if you want to cancel the installation.
16. The Permanent Connections screen appears.
  - If you want to be able to make permanent connections immediately after Setup restarts your computer, press **Enter** to select Yes.
  - If you prefer to make your connections later, select No. Press **Enter** to continue.

**Note...** If you don't choose to make permanent connections during Setup you can make them any time from Permanent Connections Management in the LANtastic NET menu.
17. After a brief pause, Setup starts copying files to your computer.

If you're installing from diskettes, insert the numbered disks as prompted, then press any key to continue.



18. The Installation Complete screen appears. Remove any disks from the floppy drive, then press any key to continue.
  - To have Setup reboot your computer and activate LANtastic, press any key.
  - To exit Setup without rebooting, press **Esc**.

**Note...** You must reboot your computer before you can begin using LANtastic.
19. If you enabled Permanent Connections in step 16, the Permanent Connections Management screen appears. Follow the steps in the next section to make permanent drive and printer connections.

## Making permanent connections

---

**Hint...** Before you start setting up permanent connections, wait until LANtastic is installed on all of the network's computers, and they've been restarted. This will allow you to see all computers available for connection. Press **F1** for Help at any time.

### To make a drive connection

1. Select Connect to other Computers' Drives. Then press **Enter**.

The Drive Connections to Other Computers screen appears. This screen shows the drive letters on your computer that are in use, such as C: for your hard drive. It also shows the drive letters that can be used to connect to drives on other computers. Typically the available letters are E through Z.

2. Select the letter you want to use and press **Enter**.

The Connect to Computer screen appears. This screen shows the computers on your network that are currently available for you to connect to. Your own computer may also appear in the list.

3. Select the name of a computer that you want to connect to, then press **Enter**.

**Note...** If the name of the computer you want to connect to doesn't appear in the list, press **Ins**, type in the name of the computer and press **Enter**.

When asked if you want to use that computer's clock, make your selection (typically No), then press **Enter**.

#### **TIP...**

---

To delete a drive or printer connection, highlight it, then press **Del**.

---

4. At the next screen, select the drive resource on the server that you want to use and press **Enter**. This is usually the C-DRIVE.  
The connection appears in the Drive Connections to Other Computers screen.
5. Repeat these steps for each drive connection you want to make at this time.
6. When you're finished making drive connections, press **Esc**.

### To make a printer connection

1. Select connect to other Computers' Printers, then press **Enter**.  
The Printer Connections to Other Computers screen appears. This screen shows the printer ports on your computer that are in use. It also shows the printer ports that can be used to connect to printers on other computers.
2. Select the port you want to use to connect to a printer and press **Enter**. This is usually LPT1.  
The Connect to Computer screen appears. This screen shows the computers on your network that are available for you to connect to. Your own computer may also appear in the list.
3. Select the name of a computer that has the printer you want to connect to, then press **Enter**.  
**Note...** If the name of the computer you want to connect to doesn't appear in the list, press **Ins**, type in the name of the computer and press **Enter**.  
When asked if you want to use that computer's clock, make your selection (typically No), then press **Enter**.
4. In the next window, select the printer resource that you want to use and press **Enter**. This is typically @PRINTER.  
The connection appears in the Printer Connections to Other Computers screen.
5. Repeat the steps for each printer connection you want to make at this time.
6. When you're finished making all connections, press **Esc**.
7. To activate these connections every time you start your computer, select Make the Current Connections Permanent and press **Enter**.
8. Press **Enter** at the confirmation window.

9. To prevent the Permanent Connections window from appearing each time you start your computer, select Show this menu on Startup and toggle the option to DISABLED.
10. To set color preferences, press **F8** and make a selection from the list then press **Enter**.
11. To exit the Permanent Connections window, press **Esc**.

## Using INSTALL switches

---

The DOS INSTALL program includes eight command line switches. You can use these switches (described below) to get information about INSTALL or to customize your installation options.

<b>/DESCRIBE</b>	Allows you to view the version number of the INSTALL program.
<b>/HELP or /?</b>	Displays a list of the valid INSTALL command line switches.
<b>/INF</b>	Allows you to predefine the settings INSTALL will use when installing LANtastic. After the INF file is created, the installation runs automatically with very little user interaction. This is very helpful when setting up multiple computers that use the same configuration.
<b>/BW</b>	Forces the INSTALL to run in black and white only.
<b>/MONO</b>	Adjusts the INSTALL color scheme for a monochrome monitor.
<b>/FLOPPY</b>	Lets you install LANtastic to a floppy disk instead of your hard drive.
<b>/REMOTE</b>	Allows you to install LANtastic across the network on a computer already running a previous version of LANtastic.
<b>/EXTRACT</b>	Allows you to select specific INSTALL files to include in your current installation. This would be helpful, for example, if you changed adapters after you installed LANtastic and needed a different driver. By using the /EXTRACT switch to get the proper driver you would avoid having to repeat the entire LANtastic installation.

1. Put LANtastic Disk 1 into your floppy drive and type:

**A:\INSTALL [switches] <Enter>**

where A: is the letter assigned to your floppy drive and [switches] are the command line switches you're using.

Or

Put the LANtastic CD-ROM into the CD-ROM drive and type: **D:\INSTALL [switches] <Enter>** where D: is the letter assigned to your CD-ROM drive and [switches] are the command line switches you're using.

2. Continue the installation starting with step 2 on page 52.

## Post-installation tasks

---

After you've finished installing LANtastic for DOS, you may want or need to perform one of more of the following tasks:

▼ **You selected the Keep Existing Settings option**

You'll need to use a text editor to integrate the commands shown in a set of example files into your original system files. LANtastic created these files during installation and they are named CONFIG.NEW and AUTOEXEC.NEW. They're located in the same directories as your original files.

You may have to edit your STARTNET.BAT file so that LANcache loads before SERVER. The LANcache program included with LANtastic 8.0 won't load if it detects that SERVER is already running.

▼ **You selected NCP (Novell NetWare) support**

If you selected NCP support and your PC has a network adapter card other than a NodeRunner Pro or NodeRunner installed, you'll need to edit your configuration files so they can work properly with your adapter. See the file called Clent.pdf in the Online Library for more information.

If you selected NCP support and your computer has a NodeRunner Pro or NodeRunner adapter installed, the adapter is automatically set up for NCP support. See the file called Clent.pdf in the Online Library for more information.

**Important...** If you want to use Remote Booting, CS Print Support or LANtastic for TCP/IP on a LANtastic computer that has NCP support enabled, you'll have to edit several files after installation. This is because when you chose NCP support, Setup automatically created an ODI/NDIS stack. The creation of this stack disables Remote Booting, CS Print Support, and LANtastic for TCP/IP capability. Information on editing the files appears in the file called EXAMPLES.TXT in your LANtastic installation directory (typically C:\LANTASTI).

▼ **You're using memory management software**

If you're using memory management software such as EMM386 (shipped with DOS 5.0 and above) or QEMM, you may have to perform additional steps. For more information, including general guidelines about using memory management software with LANtastic, see the file called Memry\_dw.pdf in the Online Library.

▼ **You selected HP JetDirect printer support**

If you chose HP JetDirect printer support, you'll need to complete the final setup steps described on page 65.

**Important...** If you're running a Token Ring network, you can't use HP JetDirect printer support until you edit the SWAP parameter in your PROTOCOL.INI file. You must change SWAP=1 to SWAP=0.

## Troubleshooting during installation \_\_\_\_\_

If you received an error message during installation, refer to the *LANTastic Troubleshooting Manual*. It contains a list of installation-related errors and their solutions.

For non-installation-related errors, refer to the file in the Online Library called Errs\_dw.pdf. It contains a complete list of the most commonly received LANTastic for Windows and DOS error messages. For instructions on using the Online Library PDF files, see "Using the Online Library" on page 6.

Additional updated information on troubleshooting problems before and after installation may be available in the Readme file, and from the PC Micro web site at [www.pcmicro.com/lantastic](http://www.pcmicro.com/lantastic)



# FINAL SETUP ISSUES

## CHAPTER CONTENTS

Printing from Windows 3.x applications . . . . .	below
SYSTEM.INI and WIN.INI file changes . . . . .	62
Adding an HP JetDirect printer to your network. . . . .	65

This chapter explains the final setup tasks you may need to complete on some or all of your computers once LANtastic 8.0 is installed.

The next three sections describe tasks that must be completed in order for specific LANtastic installation types to operate correctly.

The platform-specific sections that follow contain tasks that you may or may not want or need to perform based on your LANtastic configuration and your personal preferences.

## Printing from Windows 3.x applications

---

If you've set up your computer to use another PC's printer, and you want to send print jobs to it from Windows 3.x applications, follow the steps in this section.

**Note...** If a server is going to use its own attached printer, you must perform these steps on that server – even if it isn't going to use other printers on the network.

1. From the Windows Main group, click Control Panel, Printers.
2. Make sure the Use Print Manager option is turned off. If the box is checked, click to disable it. By default, the installation programs disable this function.
3. Under the List of Printers, select the type of printer the server is sharing.

4. If you don't see the printer the server is using under the Installed Printers list, choose Add>>. From the list, select the printer the server is using and choose Install. If you're prompted to insert a Windows diskette into your floppy drive, do so. Then follow the instructions on the screen. By default, Windows connects the selected printer to LPT1. If you want to change this connection, do so by performing steps 5 - 8.
5. Choose the Connect button.
6. From the list of ports, select the one you assigned to this printer when you installed LANtastic.
7. In the Timeouts (seconds) box, change Device Not Selected to 900. Change Transmission Retry to 950. (Device Not Selected isn't available if you've chosen a COM port.)
8. Be sure the Fast Printing Direct to Port option is turned off. If the box is checked, click to disable it. By default INSTALL disables this function. Click OK.
9. If you want this printer to be the one that jobs are automatically sent to, choose Set As Default Printer. The Default Printer appears at the top of the window.
10. Repeat steps 3 - 9 for each printer you set up for sharing when you installed LANtastic.
11. When you're finished, choose the Close button then exit the Control Panel.

## SYSTEM.INI and WIN.INI file changes ---

The LANtastic Setup program changes some of the settings in the SYSTEM.INI and WIN.INI files when it installs LANtastic's Windows 3.x interface. These files are usually located in your WINDOWS directory. This section includes a list of the changes that Setup makes to these files, along with a description of each of the options. You may customize these settings to suit your system requirements. To edit your SYSTEM.INI and WIN.INI files, use an ASCII text editor such as Windows Notepad or DOS EDIT.

**Note...** The LANtastic Setup program also makes changes to the CONFIG.SYS and SYSTEM.INI files when you install the software on a computer running Windows for Workgroups. These changes are required to disable VSHARE and IFSHLP.SYS.



If you run LANtastic Net and aren't logged in to a server that's included in the saved configuration, you'll be prompted for a username and password to that server. If you don't want to be prompted for a password, include your password in the "[Connections]" section of the WNET.INI file. By default, the WNET.INI file is placed in your WINDOWS directory.

For example, the following lines:

```
[Connections]
SERVER1=USER,?
SUSAN=USER,?
HP_SERVER=USER,?
```

would be changed to:

```
[Connections]
SERVER1=USER,SECRET
SUSAN=USER,SECRET
HP_SERVER=USER,SECRET
```

In the examples above, the question mark has been replaced with the user's password for the respective server.

## SYSTEM.INI changes

When you installed LANtastic, the changes listed below were made to the section labeled "[boot]."

The "network.driv" option was set to

```
Network.driv=C:\LANTASTI\LANTNET.DRV
```

In the section labeled "[386Enh]," these options were set as follows:

```
Network=*VNETBIOS,C:\LANTASTI\LANTASTI.386
NetAsynchFallback=TRUE
NetAsynchTimeout=5.0
NetHeapSize=64
PerVMfiles=0
```

Here are descriptions of the options set on the previous page:

<b>Network=</b>	Tells Windows which network driver to use. To use LANtastic, you must use the LANTASTI.386 driver.
<b>NetAsynchFallback=</b>	Tells Windows to allocate more local buffer space if there isn't enough global space to handle a NETBIOS request. This can help Windows save a failing request.
<b>NetAsynchTimeout=</b>	Specifies the timeout period in seconds that Windows will attempt to save an asynchronous failing NETBIOS request. The value of five is suggested. You may adjust this value according to your system requirements.
<b>NetHeapSize=</b>	Sets the size of the buffers (in kilobytes) that Windows uses in 386 enhanced mode for transferring network data. The suggested value is 64K. You may adjust this value according to your system's needs.
<b>PerVMfiles=</b>	Specifies the number of private file handles that Windows will allocate for each virtual machine. The total number of global and local file handles can't exceed 255. Normally you'll use the FILES= command in your CONFIG.SYS to specify the maximum number of open files. If you've set Max Files Open to Use CONFIG.SYS in the server startup parameters, you must set PerVMfiles to zero. If you've specified more open files in the server startup parameters Max Files Open option, you may increase the value for this field as well. Any value greater than 255, however, will be reset at 255.

You may also need to include the **EMMExclude=** command if you're using a network adapter with a RAM or ROM chip installed. For more information, refer to the PDF file called Memry\_dw.pdf.

The following line was also added to the "[boot.description]" section.

**network.drv=LANTastic for Windows Version....**

### LANtastic section

In addition to changing the "[boot]," [boot.description] and "[386enh]" sections, the installation creates a new section called "[LANtastic]". The **NETWORK\_IRQ=** option is added and is set to 15. If you have more than one adapter in your computer, add one **NETWORK\_IRQ=** switch per adapter. Make sure you enter the correct IRQ for each adapter.

## WIN.INI change

The only change INSTALL makes to the WIN.INI file is to specify that LANtastic Net is loaded each time Windows is run. This allows you to receive pop-up messages from within Windows. You'll see this command in the "[Windows]" section of the file:

**Load=C:\LANTASTI\WNET.EXE**

You can delete this line if you don't want LANtastic Net to be loaded each time Windows is run.

## Adding an HP JetDirect printer to your network \_\_\_\_\_

LANtastic 8.0 allows you to add a Hewlett-Packard® JetDirect™ printer directly to your network without attaching it to a computer. You can do this because the printer has its own network adapter and address. This allows you to take full advantage of the printer's ability to receive print jobs at a faster rate than non-direct printers. It also eases the workload on the server and allows you to place the printer in nearly any location without compromising space or network security.

To add an HP JetDirect printer to your network, you must first set up a resource for it and make some configuration changes on a Windows 3.x or DOS server in your network.

This server accepts print jobs from the network and sends them to the printer. This server has to run the NDIS protocol stack and the printer's driver software. The following steps show you how to install an HP JetDirect printer into your network.

**Note...** If you select HP JetDirect printer support during LANtastic Setup, it completes steps 1-2 for you automatically. These steps also assume that you've already installed LANtastic using an NDIS adapter driver.

### **Tip...**

---

Microsoft's MS\$DLC is supported only on 486/33 or slower computers.

---

1. On the server computer that you'll be creating the printer resource for the JetDirect printer on, edit the PROTOCOL.INI file to modify the [MS\$DLC] section. Edit the BINDINGS= line to refer to the NIF section for your adapter. The NIF section should match the BIND\_TO= switch on the AI-NDIS command line located in the STARTNET.BAT file.

**[MS\$DLC]**

```

Drivename=msdlc$
bufqelements=128
dlcretries=5
stations=25
saps=7
swap=0
BINDINGS=AEXNDIS_NIF

```

**Important...** If you have a Token Ring network, you must make sure the SWAP parameter's value is set to 1. If you have an Ethernet network, set this value to 0.

2. In your STARTNET.BAT file, add the command MSDLC. This command should come before the AI-NDIS command.

**MSDLC**

```

AI-NDIS BIND_TO=AEXNDIS_NIF
AILANBIO @STARTNET.CFG

```

**Note...** Steps 3 - 8 refer to LANtastic's Windows-based Network Manager program. LANtastic's DOS-based NET\_MGR program follows a similar sequence, except that you'll be prompted for any required entries.

3. Run LANtastic's Network Manager program. Choose Resources and press Insert to add a resource.
4. In the Add Resource window, choose Shared Device and type in a name and description for the printer. Choose the Device button.
5. In the Select Device Type window, choose HP JetDirect.
6. In the Node ID field, enter the 12-digit node ID for the printer. This number is printed on the back of the external HP JetDirect EX box, or it can be found by running the printer's self-test for internal HP JetDirect cards. See your printer and HP JetDirect documentation for information.
7. Choose the printer's adapter number (almost always 0) and choose OK, then choose OK from the Add Resource window.

**Note...** These instructions apply only to a single adapter installation. Be sure to select adapter 0 unless you've customized your system for multiple adapter use.

8. Enable the HP JetDirect Support option in the LANtastic Server Control Panel's Printer Parameters Module, as described in Chapter 7 of your *LANtastic for Windows User's Manual*.

If you're using the DOS-based NET\_MGR program, you can enable the HP JetDirect Support option by selecting Server Startup Parameters and entering a path to the SERVER.EXE file. In the Server Startup Parameters screen that appears, select Printing and then select HP JetDirect Support from the Printing Configuration screen.

9. Cable the printer's adapter to the network as you would a new computer.
10. Reboot your computer.



# INDEX

## A

- about the documentation 3
- accounts, creating in DOS (PDF file) 5
- Accts\_d.pdf file, described 5
- Acrobat Reader
  - downloading 6
  - installing
    - DOS 8
    - on hard drive 7
    - Windows 3.x 7
    - Windows 95/98 7
    - Windows NT 7
  - PDF files, listed 4
  - using the Find feature 9
- adapters
  - using multiple (PDF file) 5
  - with RAM or ROM chip 64
- Additional Options screen (DOS) 54
- Adobe Acrobat Reader
  - downloading 6
  - installing
    - DOS 8
    - on hard drive 7
    - Windows 3.x 7
  - PDF files, listed 4
  - using the Find feature 9
- AUTOEXEC.NEW, example file
  - integrating with system files 48, 58
- Autoplay
  - what to do if it's disabled 19, 30
- Autorun feature
  - using 30

## B

- backing up the LANtastic database 18, 28
- batch files, creating 17
- Beginner.pdf file, described 5
- booting, remote (PDF file) 5
- buffers
  - allocating local buffer space 64

## C

- CD-ROM
  - error messages file on 6
  - installing LANtastic for Windows 3.x from 39
  - installing LANtastic for Windows 95/98 from 30
  - installing LANtastic for Windows NT from 20
  - PDF files on 4
- Cfgsrv\_d.pdf file, described 5
- Clent\_dw.pdf file, described 5
- clients and protocols, removing 34
- command line switches, using to customize installation 57
- commands and switches (PDF file) 5
- Commd\_dw.pdf file, described 5
- Computer Name screen (DOS) 53
- computer name with LT-prefix 21, 32
- CONFIG.NEW example file,
  - integrating with system files 48, 58
- CONFIG.SYS file
  - changes made during LANtastic setup 62
- configuration files
  - editing for NCP support 48, 58
- Configure Server button 17

- Confirm Resource Setup window 24
- Confirm Resource Setup window (Windows 95/98) 35
- control directories, multiple (PDF file) 5
- Crldir\_d.pdf file, described 5
- CS Print Support 48, 58
- Custom Control Panel
  - restoring settings 25, 35
  - saving configuration 19, 28

## D

- DESCRIBE, install switch (DOS) 57
- diskettes
  - creating an installation set 14
  - installing LANtastic from 20
- documentation, described 3
- DOS
  - LNET program, described 17
- Drives\_d.pdf file, described 5

## E

- enabling JetDirect support 44
- enhanced mode, SYSTEM.INI settings 63
- Enter Directory screen (DOS) 53
- Enter Target Drive screen (DOS) 53
- error messages
  - installation-related. *See* Troubleshooting Manual listed in PDF files 5
  - See also* Errs\_dw.pdf and Errs\_95.pdf
- Errs\_95.pdf file, described 5
- Errs\_dw.pdf file, described 5
- EXAMPLES.TXT file, using 48, 58

Expand\_d.pdf file, described 5  
 expanding and changing your network (PDF file) 5  
 EXTRACT, using to remove files from installation diskettes 57

## F

Fast Printing Direct to Port option (Windows) 62  
 features of LANtastic 8.0 1–2  
 final setup issues 61–67  
 files  
     AUTOEXEC.NEW, integrating with system files 48, 58  
     CONFIG.NEW, integrating with system files 48, 58  
     configuration, editing after installation 48, 58  
     configuration, editing for NCP support 48, 58  
     EXAMPLES.TXT 48, 58  
     in Online Library 4  
 FILES=, specifying number of private file handles 64  
 Finishing Up screen (DOS) 54  
 FTP server 6  
     *See also* Directory of Support Services

## G

glossary (PDF file) 5

## H

Help, online 4  
 HP JetDirect printer  
     adding to network, setup steps 65–67  
     support 49, 59

## I

Imprv\_d.pdf file, described 5  
 Increase Computer Connections screen (DOS) 53

Indir\_dw.pdf file, described 5  
 indirect files feature (PDF file) 5  
 Installation Complete screen (DOS) 55  
 installation diskettes  
     creating 14  
     installation steps 20  
     installing  
         adapters 64  
         Additional Options screen (DOS) 54  
         canceling installation 29  
         DOS install switches, listed 57  
         error messages received. *See* Troubleshooting Manual  
         evaluation copy of LANtastic for Windows NT 21  
         from the CD-ROM if Autoplay is disabled 19, 30  
         LANtastic for DOS 51–59  
         LANtastic for Windows 3.x 39–49  
         LANtastic for Windows 95/98 27–38  
         LANtastic for Windows NT 17–26  
         planning 11–14  
         pre-installation checklist 13  
         removing unneeded network components after 34  
         system requirements 13  
 IPX Routable NetBIOS (PDF file) 5  
 IPX/SPX compatible protocol, removing after installation 34  
 lpx\_dw.pdf file, described 5  
 IRQ (Interrupt Request)  
     changing settings for network adapter card 49

## L

LANCACHE, using (PDF file) 5

LANCHECK  
 LANCHECK (PDF file) 5  
 LANtastic  
     uninstalling 28  
 LANtastic 8.0  
     compatibility with other versions of LANtastic 2, 11, 17, 27, 39, 51  
     features 1  
     installation steps 51  
     restoring settings 24  
 LANtastic Custom Control Panel running 24  
 LANtastic database  
     backing up 18, 28  
     restoring 24, 35  
 LANtastic for Windows 3.x  
     post-installation tasks 48  
     removing from a computer running Windows 95/98 29  
 LANtastic for Windows 95/98  
     installation steps 30  
     installing 27–38  
     post-installation tasks 37  
     uninstalling 37  
 LANtastic for Windows NT  
     differences from previous versions of LANtastic 17  
     installing an evaluation copy 21  
     post-installation tasks 25  
     uninstalling 25  
 LANtastic forDOS  
     post-installation tasks 58  
 LANtastic Options window (Windows 3.x) 44  
 LANtastic Setup Options window 21  
 LANtastic Setup Options window (Windows 95/98) 32



LANtastic Setup Summary  
window (Windows 3.x) 45

LANtastic Setup window  
(Windows 3.x) 41

Lcach\_dw.pdf file, described 5

License Verification window  
Windows 3.x 40  
Windows 95/98 31

List of Printers option (Windows)  
61

Lncheck.pdf file, described 5

LNETH and LNET manager  
(Windows 95 PDF files) 5

LNET program  
described 17  
overview 17

Lnet\_95.pdf file, described 5

LNETH\_MGR program  
described 17

Lnetm\_95.pdf file, described 5

logon box, about the primary 36

LT-prefix  
in front of computer name 21,  
32

## M

Mail and Chat features (PDF file) 5  
memory management

PDF file 5  
software, using 49, 58

Memry\_dw.pdf file, described 5

Mlcht\_d.pdf file, described 5

Mngprt\_d.pdf file, described 5

Mngsrv\_d.pdf file, described 5

MS\$DLC section of  
PROTOCOL.INI, editing 65

Multi\_dw.pdf file, described 5

multiple adapters (PDF file) 5

## N

Nbset\_dw.pdf file, described 5

NBSETUP program, using (PDF  
file) 5

NCP (Novell NetWare) support  
editing configuration files for  
48, 58

NCP support (PDF file) 5

NDIS support (PDF file) 5

Ndis\_dw.pdf file, described 5

NetAsynchfallback= option 64

NetAsynchTimeout= option 64

NetBEUI, removing component  
after installation 34

NetHeapSize= option 64

network  
communication, testing 4  
expanding and changing (PDF  
file) 5

performance, improving (PDF  
file) 5

traffic control (PDF file) 5

network adapter cards  
See adapters

Network Adapter Setup window  
(Windows 3.x) 44

network components, removing  
34

network driver setting in  
SYSTEM.INI 63

Network= option 64

networking  
introduction to (PDF file) 5

## O

Online Library  
downloading PDF files 6  
how to get files 6  
how to use 6  
list of files 4

PDF files

printing 10  
viewing and navigating 9

Online Library files

installing Acrobat Reader to  
use 6

## P

PDF files 6

alternate sources of  
information in 6

downloading with Acrobat  
Reader 6

installing Acrobat Reader 6, 7  
listed 4–6

on CD-ROM and electronic  
sites 4–6

printing 10  
viewing and navigating 9

performance

controlling server 17

performance, network  
improving (PDF file) 5

Permanent Connections  
Management screen (DOS) 55

Permanent Connections  
Management window (Windows  
3.x) 46

Permanent Connections screen  
(DOS) 54

Permanent Connections windows  
(Windows 3.x) 45

PerVMfiles= option 64

planning

installation 11–14  
pre-installation checklist 13

post-installation information 37

post-installation tasks

LANtastic for DOS 58

LANtastic for Windows 3.x 48

- LANtastic for Windows 95/98 37
- LANtastic for Windows NT 25
- pre-installation checklist 13
- primary logon box, about 36
- Print\_d.pdf file, described 5
- printers
  - setup for Windows applications 61–62
- printing
  - from Windows 3.x applications 49, 61
  - managing in DOS (PDF file) 5
- private file handles, specifying quantity 64
- problems 38, 49, 59
  - See also* Troubleshooting Manual
- PROTOCOL.INI file, editing 59

## R

- Rboot\_dw.pdf file, described 5
- Registration window (Windows 3.x) 41
- Remote Booting 48, 58
- remote booting (PDF file) 5
- Removing LANtastic for Windows 3.x from a computer running Windows 95/98 29
- requirements, system 13
- restoring Custom Control Panel settings 25, 35
- restoring LANtastic settings 24
- restoring the LANtastic database 24, 35
- running the LANtastic Custom Control Panel 24

## S

- saving Custom Control Panel configuration 19, 28
- Select Adapter screens (DOS) 54
- Serial Number screen (DOS) 52

- server
  - configuring (PDF file) 5
  - managing in DOS (PDF file) 5
  - memory manager (PDF file) 5
  - settings, controlling 17
- server startup parameters (PDF file) 5
- Set As Default Printer option (Windows) 62
- setup
  - final issues 61–67
- Share Drives and Printers screen (DOS) 53
- shared resources in DOS, using (PDF file) 5
- sharing drives, DOS (PDF file) 5
- Shrres\_d.pdf file, described 5
- SMB support (PDF file) 5
- Summary screen (DOS) 54
- Summary window 23
- Summary window (Windows 95/98) 32
- support, technical
  - See* Directory of Support Services
- SWAP parameter 59
  - setting for Token Ring network 66
- switches and commands (PDF file) 5
- system requirements 13
- SYSTEM.INI file
  - changes made by LANtastic setup 63–64
  - changes to file during LANtastic setup 62
- SYSTEM.INI options
  - NetAsynchfallback= 64
  - NetAsynchTimeout= 64
  - NetHeapSize= 64
  - Network= 64
  - PerVMfiles= 64

## T

- technical support
  - See* Directory of Support Services
- Token Ring network 59
  - setting SWAP parameter 66
- troubleshooting
  - DOS installation 59
    - See also* Troubleshooting Manual
  - information, finding in online Help and Readme file
  - LANtastic for Windows NT installation 26
  - Windows 3.x installation 49
    - See also* Troubleshooting Manual
- Troubleshooting Manual, described 4

## U

- uninstalling LANtastic 28
- uninstalling LANtastic for Windows 95/98 37
- uninstalling LANtastic for Windows NT 25
- Universal Client Options window (Windows 3.x) 43
- upgrading
  - from previous version of LANtastic 11
- Use Print Manager option (Windows) 61
- user name and password prompts 36
- using the Autorun feature 30

## V

- Verification Key screen (DOS) 52

**W**

WAIT switch 17

WIN.INI file, changes to file during  
LANtastic setup 62

Windows 3.x applications  
printing from 49, 61

Windows NT 4.0 Service Pack 3 or  
higher  
verifying existence of 13

WNET.INI file  
preventing password  
prompting in LANtastic 63

